



- Lamp-free Laser Phosphor technology
- Notch Filter technology to provide better colour performance
- 20,000 hours life span
- Ultra-high Contrast
- H/V Keystone & 4 corner adjustment

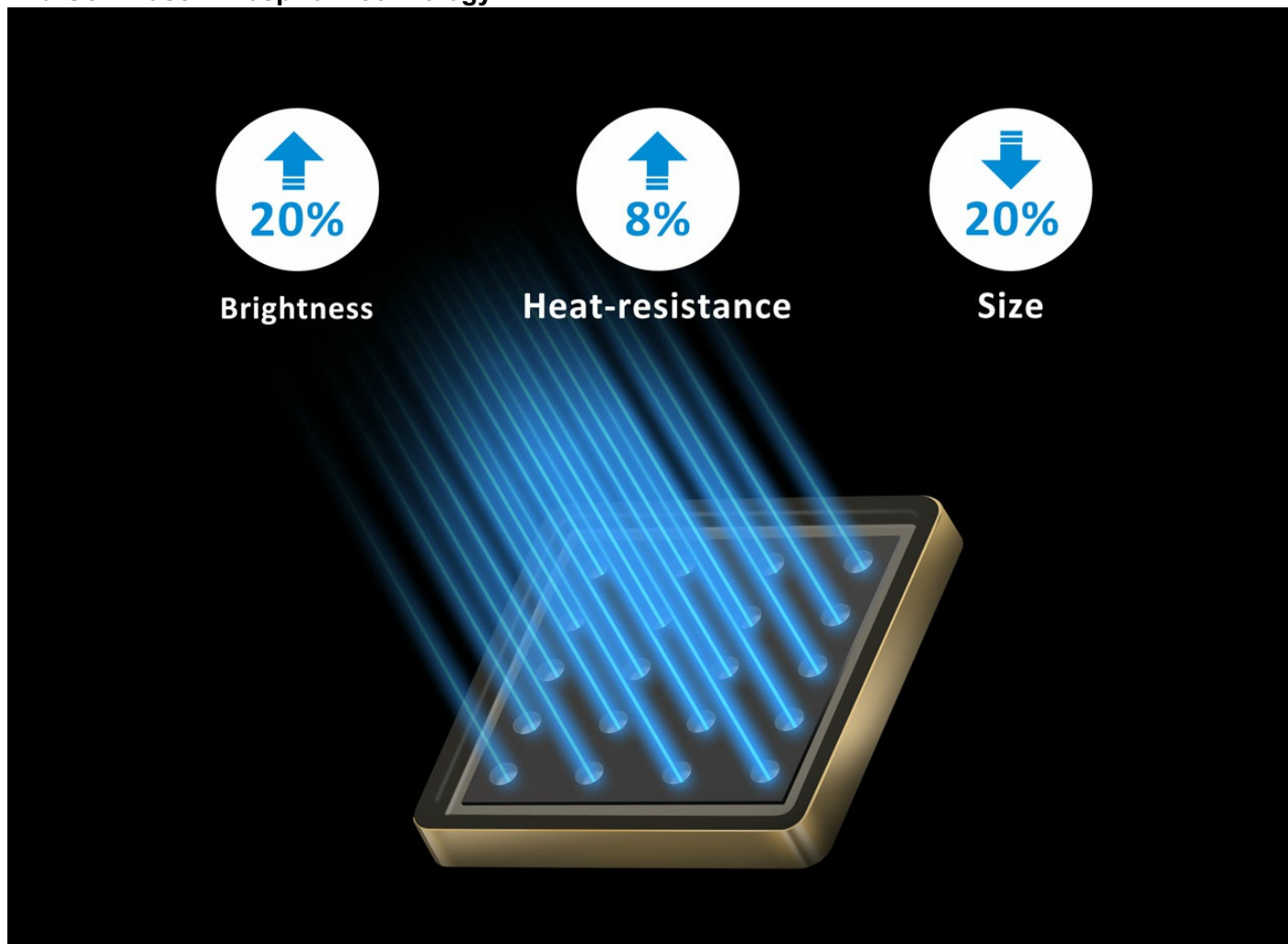
The ViewSonic® LS700HD is a lamp-free 1080p laser home projector featuring 3,500 ANSI lumens high brightness and cinematic colour for you to set up your big screen experience in a bright living room or in your home theater. Thanks to laser phosphor technology, this projector offers up to 20,000 hours long life span and makes lamp replacement a thing of the past. Featuring 3X fast input, 3D Blu-ray capability, and a pre-set movie mode that uses Notch Filter technology, the LS700HD delivers an immersive big screen experience for playing games, watching movies or any kind of entertaining content.

2nd Generation Laser Phosphor Technology

This new ViewSonic laser projector adopts 2nd generation laser phosphor technology. In addition to inheriting excellent colour performance, lamp-free design, and its instant on/off switch from the previous generation, technology on the new generation improves brightness by around 20%, offers better heat-resistance, and has a smaller module design. These improvements make projected images more consistent in ambient settings as well as increase reliability with a more compact size for extended use in various

scenarios.

2nd Gen. Laser Phosphor Technology



Bright and Rich Color

Featuring ViewSonic's proprietary Notch Filter technology*, this projector ensures better optimised colour performance than other high brightness projectors, without compromising quality.

*Notch Filter technology is active when choosing movie mode.

Notch Filter technology



Notch Filter Technology

20,000 Hours Lifespan

The laser light source offers 20,000 hours of maintenance-free operation in Eco Mode, meaning that the LS700HD could be used 4 hours a day for more than 13 years with no degradation in brightness.

20,000 hours

 **20,000** Hours
4 Hours per Day
More than 13 Years 



Ultra-high Contrast

A 3,000,000:1 ultra-high contrast ratio enhances even the finest shades of grey – a key characteristic for delivering excellent clarity and detail for razor-sharp images.

3,000,000:1 contrast ratio



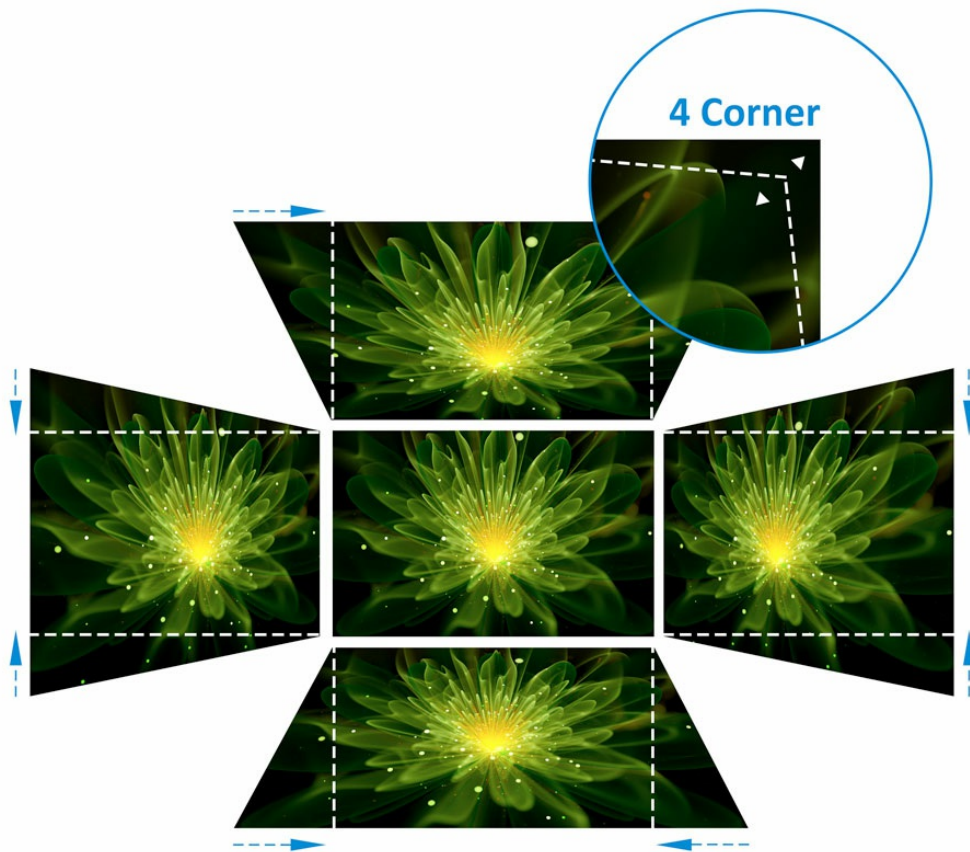
Normal

3,000,000:1

H/V Keystone & 4 Corner Adjustment

Horizontal and Vertical Keystone correction along with 4 corner adjustment features eliminate crooked or distorted images for a perfectly proportioned picture every time.

H/V Keystone



Bright Images Every Time

Images on the LS700HD look bright under any lighting conditions. Thanks to a high brightness of 3,500 ANSI Lumens your images won't get washed out when watching movies or playing games during the day or with the lights on.

3,500 ANSI Lumens



3,500
ANSI Lumens



Fine Detail and Clarity

Full HD 1080p (1920 x 1080) resolution depicts subtle details clearly so you can easily distinguish different elements of the content on your screen.

Full HD 1080p



HD



Full HD

SuperColor™: Best in Class Colour Accuracy

ViewSonic's proprietary SuperColor™ Technology offers a wider colour range, ensuring users enjoy true-to-life colour projection in both bright and dark environments.

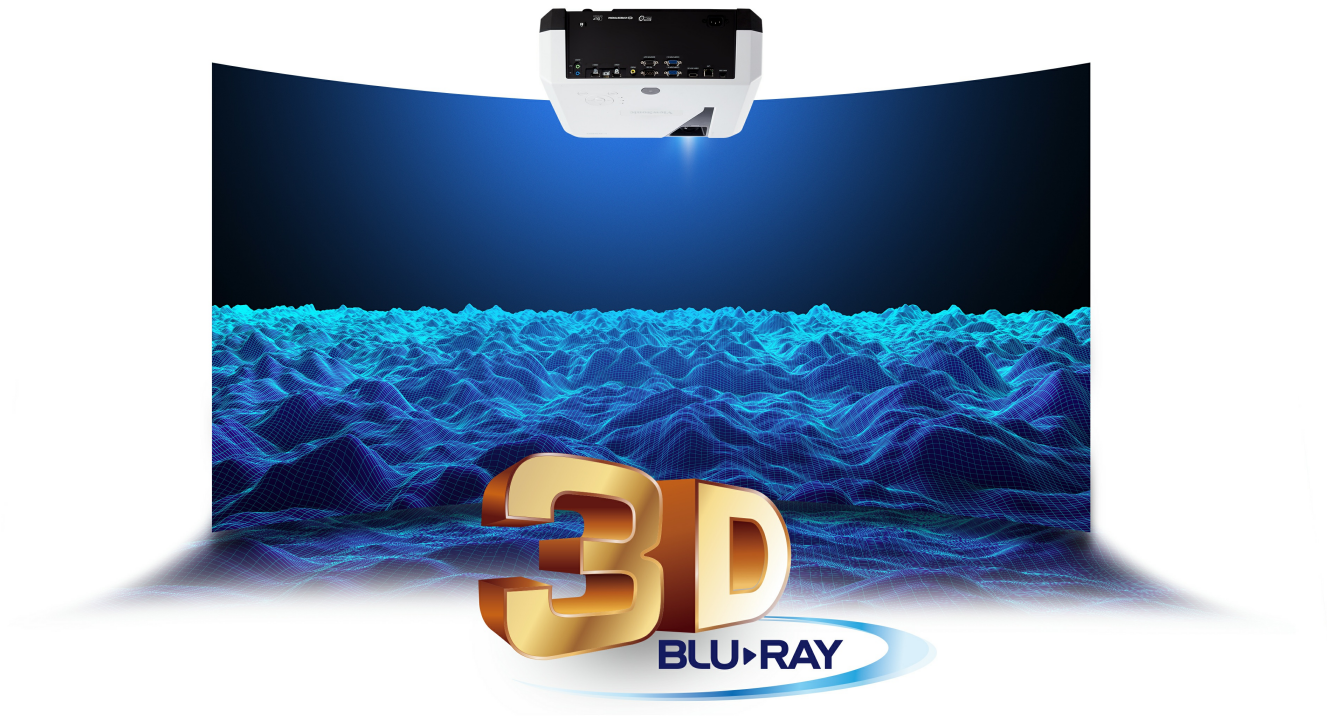
SuperColor™ Technology



Immersive 3D Viewing

The LS700HD can project 3D content directly from 3D Blu-ray players and HDMI-enabled devices such as laptops, tablets, and media players via HDMI connection.

3D



LAN Control

IT administrators can monitor, schedule, and manage the projector remotely, as well as receive projector status alerts, with the integrated Crestron® e-Control™ system and RoomView Express™ management software. As the LS700HD projector is Crestron® and AMX®certified, administrators can control and monitor the projector for any size campus or enterprise.

In addition, ViewSonic vController management software provides effortless maintenance and intuitive interfaces for remote management.

vController



256
Projectors

360-degree Projection

A robust mechanical construction allows the projector to be installed in nearly any position, at any angle from floor to ceiling. You can mount the projector pointing straight down at the floor of a museum exhibit or art gallery installation, or mount the projector upside-down at a 45-degree angle if needs be.

360-degree



Portrait Projection

Portrait mode adds more applications for projection mapping, staging, and advertising.
Portrait Projection

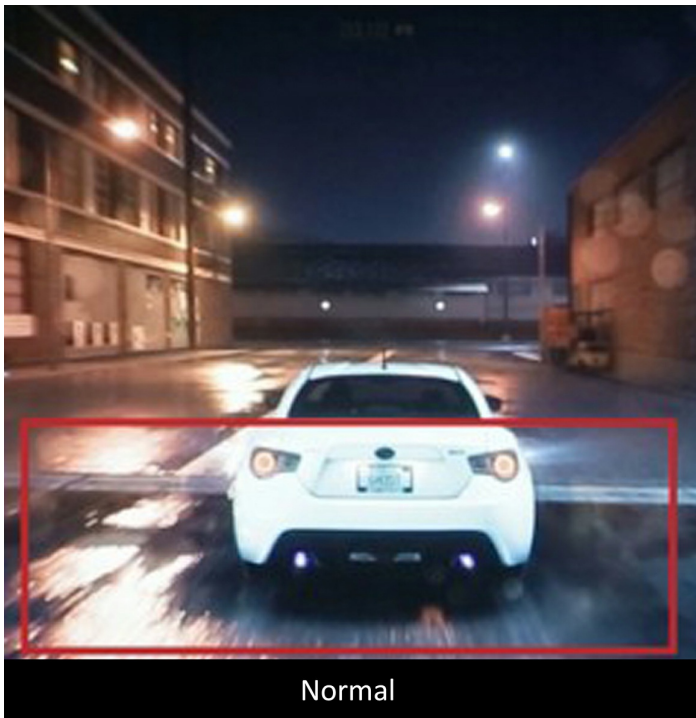


Enhanced Gaming Experience

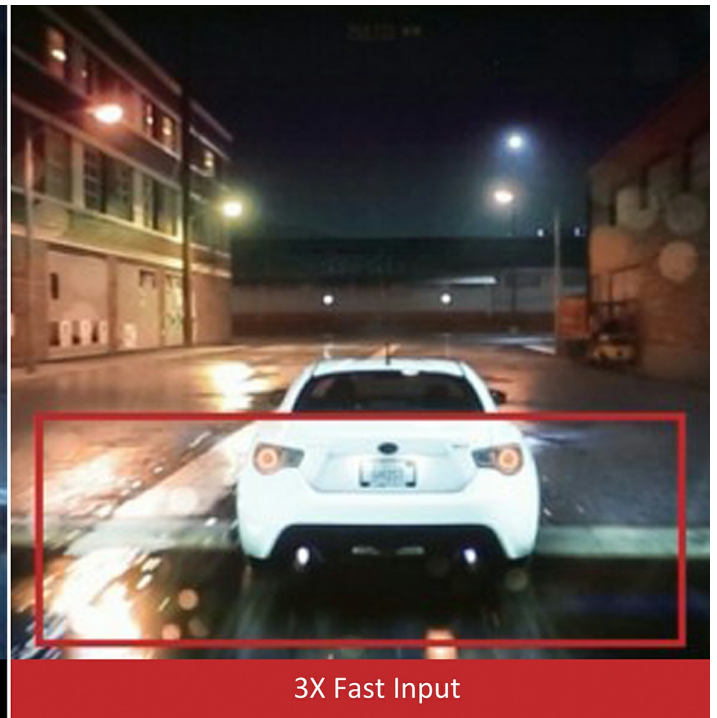
3X fast input allows you to deliver attacks right when you want to without delay*, giving you a competitive advantage when gaming and taking the experience to the next level.

*Video latency is measured via lag metering. Video lag recorded on HV-keystone projectors is approximately 48ms. Enabling 3X Fast Input on HV-keystone projectors reduces video lag to 16.4ms. All recorded benchmarks are based on the ViewSonic PJD7720HD projector. Results may vary across different projector makes and models.

3X Fast Input



Normal



3X Fast Input

Instant Activation Upon Signal Detection

The LS700HD laser projection turns on and off instantly without the warm up or cool down period required by conventional lamp projectors. Restarting an unresponsive projector can be done in seconds, cutting down teachers' downtime during lectures.

- Signal Power On: Power on automatically upon detection of a VGA or HDMI cable connection.
- Direct Power On: Connect the power cord to begin; the projector will power on all on its own once the cord is connected.

Auto Power On



Advanced dust-proof projector with IP5X

ViewSonic adopts the latest laser dust-proof technology to enhance reliability and protect the projector from dust damage with IP5X Certification.

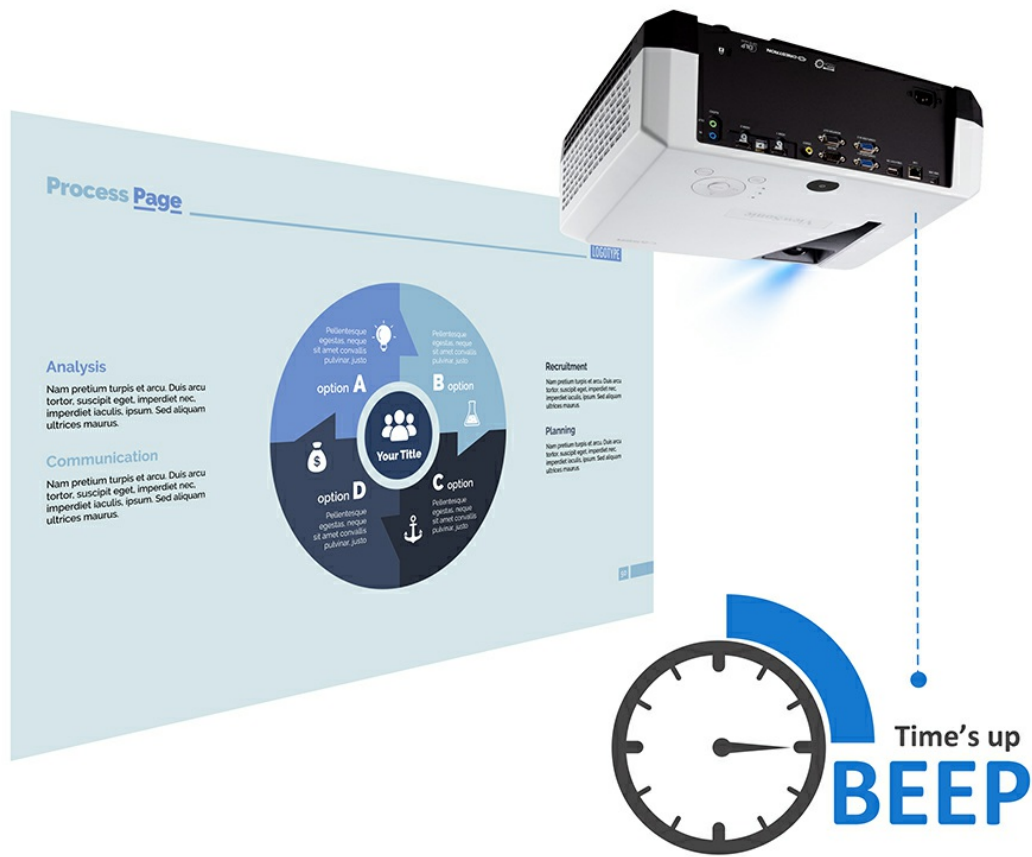
IP5X



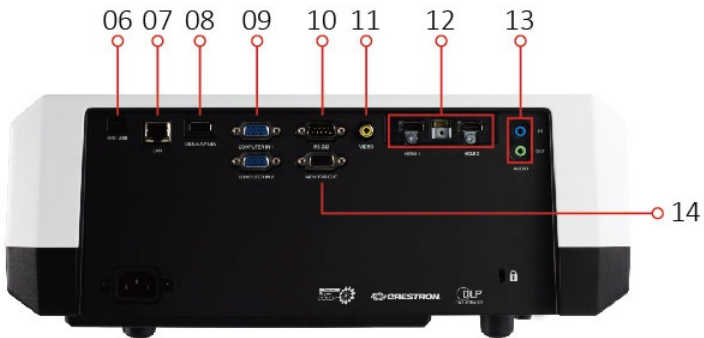
Presentation Timer

The Presentation Timer is an embedded on-screen timer that can be used as an excellent time management tool for helping presentations run on schedule.

Presentation Timer



Exterior & Rear I/O Connectors



1. Keypad
2. LED indicator
3. Power Key

4. Zoom/Focus
5. Front IR
6. Mini USB
7. Lens
8. USB 5V/1.5A OUT
9. Computer In
10. RS-232
11. Video
12. HDMI
13. Audio in/out
14. Monitor in

Technical Specifications

Specification	Projection System	0.47" 1080p
	Native Resolution	1920x1080
	DMD Type	DC3
	Brightness	3500 ANSI Lumens
	Contrast Ratio with SuperEco Mode	3000000:1
	Display Colour	1.07 Billion Colours
	Light Source Type	Laser Phosphor system
	Light Source Life (Normal)	up to 20000
	Light Source Life (SuperEco)	up to 20000
	Lamp Watt	Nichia MCD
	Lens	F=1.9-2.49, f=12-15.6mm
	Projection Offset	100%+/-5%
	Throw Ratio	1.13~1.47
	Image Size	60" - 300"
	Throw Distance	1.5-8.79m(100"@2.5m)
	Keystone	H:+/-40° , V:+/-40°
	Optical Zoom	1.3X
	Digital Zoom	0.8x ~ 2.0x
	Audible Noise (Normal)	34dB
	Audible Noise (Eco)	32dB
	Input Lag	16ms (TBD)
	Resolution Support	VGA(640 x 480) to FullHD(1920 x 1080)
	HDTV Compatibility	480i, 480p, 576i, 576p, 720p, 1080i, 1080p
	Video Compatibility	NTSC, PAL, SECAM
Horizontal Frequency	15K~102KHz	
Vertical Scan Rate	23~120Hz	
Input	Computer in (share with component)	2
	Composite	1
	Audio-in (3.5mm)	1
	HDMI	2 (HDMI 1.4a/HDCP1.4 x2)

Output	Monitor out	1
	Audio out (3.5mm)	1
	Speaker	2W
	USB Type A (Power)	1 (5V/ 1.5A)
Control	RS232 (DB 9-pin male)	1
	RJ45	1
	USB Type Mini B (Services)	1
Others	Power Supply Voltage	100-240V+/- 10%, 50/60Hz AC
	Power Consumption	Normal: 260W Standby: <0.5W
	Operating Temperature	0~40°C
	Net Weight	7.14Kg
	Dimensions (WxDxH) with Adjustment Foot	396x314x157mm
	OSD Language	English, French, Spanish, Thai, Korean, German, Italian, Russian, Swedish, Dutch, Polish, Czech, T-Chinese, S-Chinese, Japanese, Turkish, Portuguese, Finnish, Indonesian, India, Arabic, Vietnamese
	Standard Accessory	Power Cord
VGA Cable		1
Remote Control		1
QSG		1