

6,000 ANSI Lumens WUXGA Laser Installation Projector

LS900WU



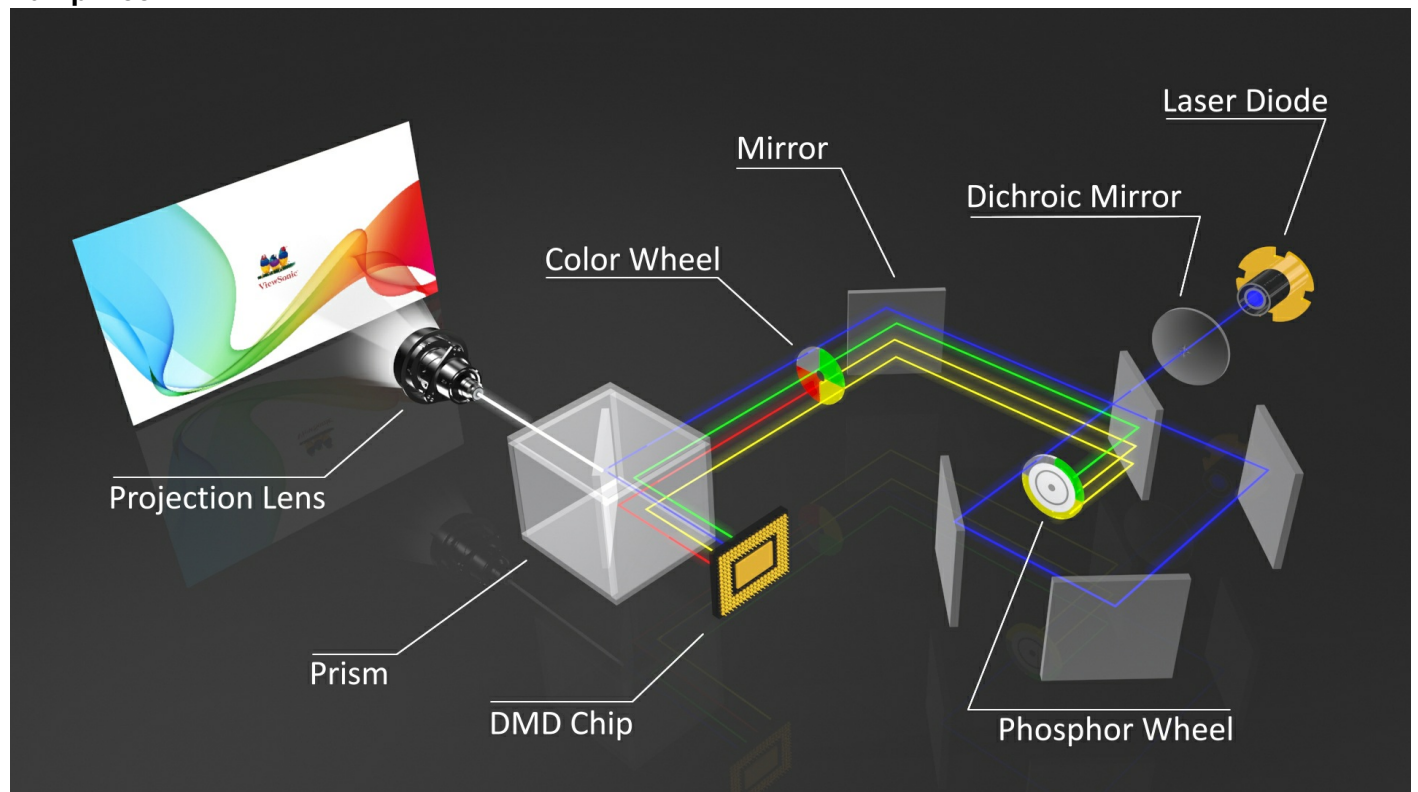
- Laser phosphor technology
- 6,000 ANSI Lumens
- 30,000 hours of maintenance-free projection
- H/V lens shift
- 1.65X optical zoom

Bright and versatile for any professional installation, the ViewSonic LS900WU WUXGA laser projector delivers everything you need for big screens in big venues. Delivering 6,000 ANSI lumens of advanced high brightness, a 100,000:1 contrast ratio, and up to 30,000 hours of light source life, this projector is ideal for auditoriums, lecture halls, large boardrooms and more. Thanks to SuperColor™ technology, content is brought to life with captivating visuals, crisp graphics, and superior colour reproduction. It is also easy to deploy and manage with its wide 1.65x optical zoom adjustment, vertical/horizontal keystone correction, 4 corner adjustment, and a vertical/horizontal lens shift feature – all providing maximum flexibility in even the most challenging installations. Moreover, 360-degree tilt angle projection, portrait mode, and 24/7 operation allow for several mounting options. The ViewSonic LS900WU is the ideal WUXGA laser projector for professional installations and large venues, as well as business and education environments.

Laser Phosphor Technology

Unlike traditional lamp based projectors, the LS900WU is designed with laser phosphor technology, which provides virtually maintenance-free usage for a lower overall total cost of ownership.

Laser Phosphor Lamp-free



High Brightness

Packed with 6,000 ANSI Lumens, the LS900WU projector is guaranteed to produce high levels of brightness suitable for large spaces with a lot of ambient light.

6,000 ANSI Lumens

A white projector sits on a white surface, projecting a blue beam of light upwards. The beam illuminates a large blue number '6,000' and the text 'ANSI Lumens' below it. The background is a shoe store with glass display cases filled with various styles of shoes and handbags. The store has a modern interior with white walls and a brick wall on the right side.

6,000
ANSI Lumens

Long-lasting Lifespan

Laser technology offers a lifespan up to 30,000 hours (8 hours per day for more than 10 years), delivering reliable long-term performance with no degradation in brightness over time so that your installations are consistently vibrant.

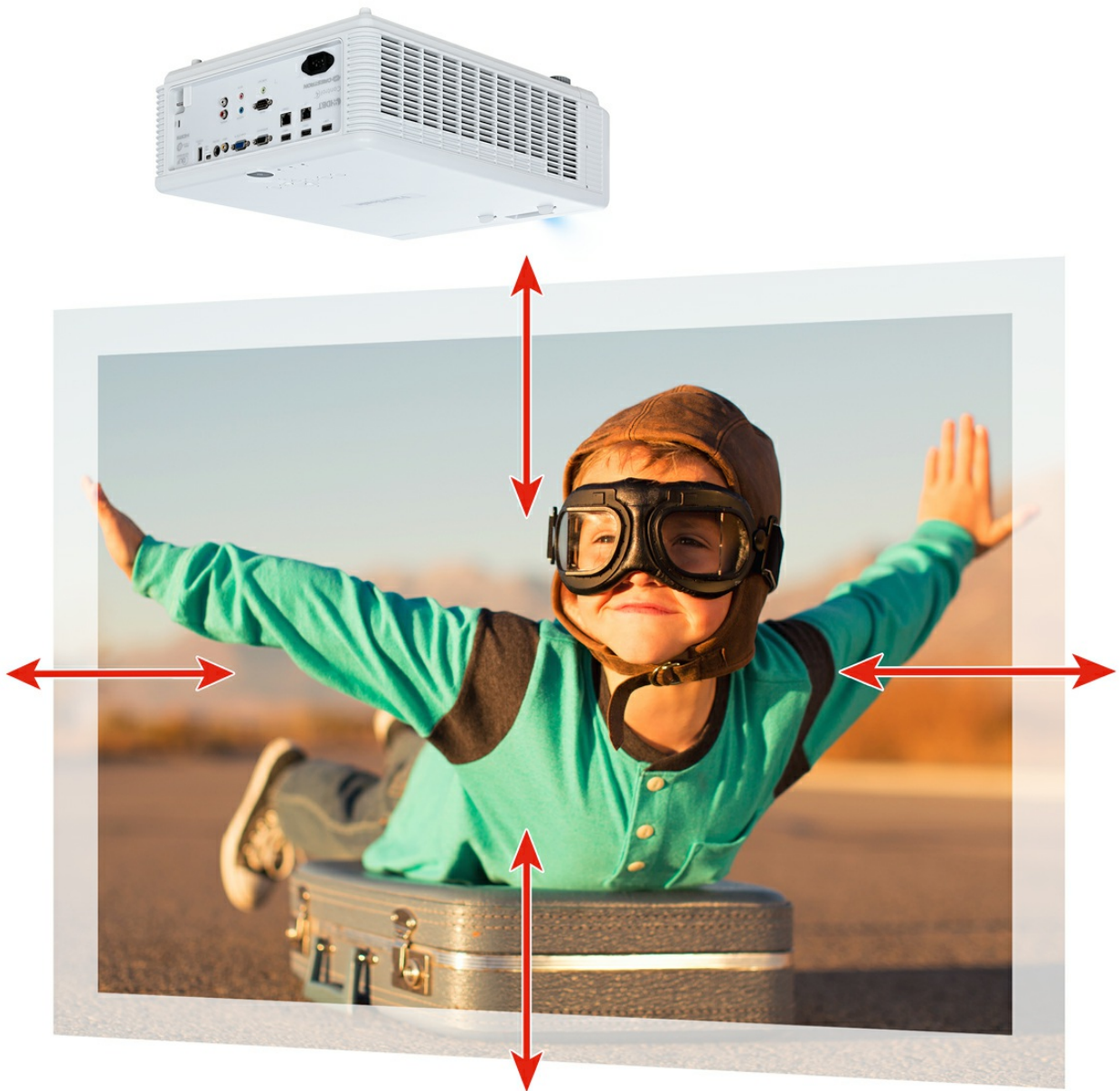
30,000hours Lifespan



Installation Flexibility

The tool-free, lens shift control knobs make adjusting the projection lens up, down, left, and right easy – providing flexible installation options with less placement restrictions.

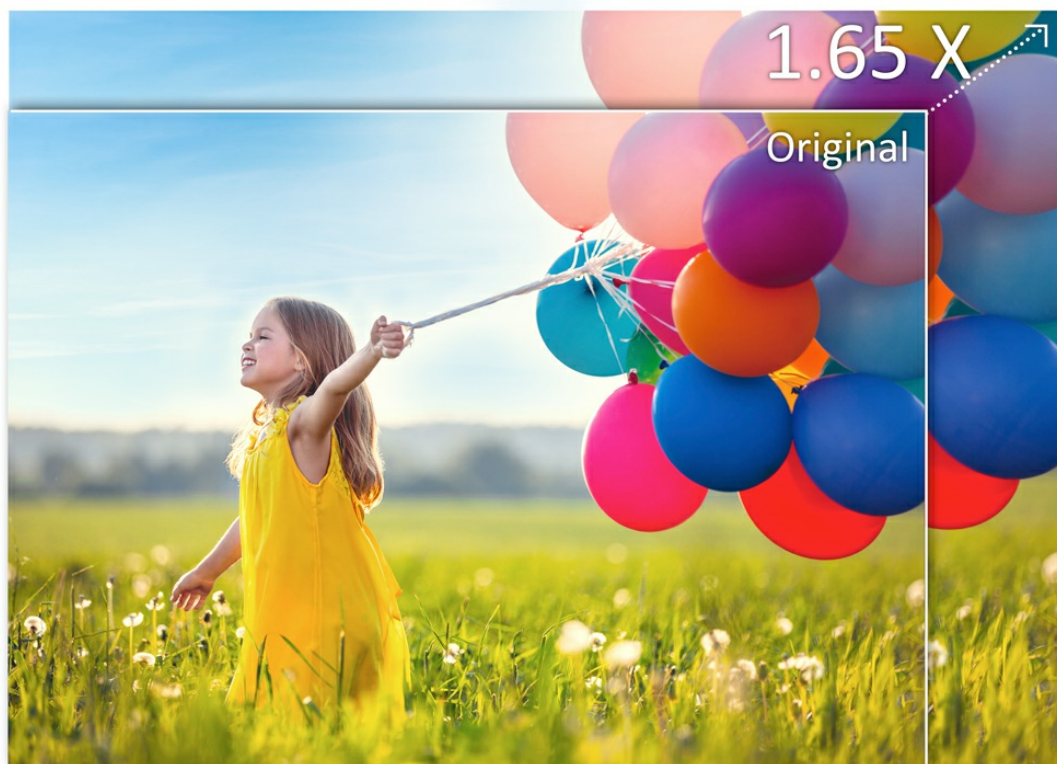
H/V Lens Shift



Larger than Life Images

Equipped with a 1.65x optical zoom lens, the LS900WU provides mounting flexibility with a wider throw distance range.

1.65xOptical Zoom



Built-in HDBaseT Receiver

The LS900WU's built-in HDBaseT receiver is a cost-effective solution to transmit uncompressed high resolution audio and video at distance (100 meters for 1080p and 70 meters for 4K/2K) when combined with a cat6 cable and is compatible with any certified HDBaseT transmitter.

HDBaseT Receiver



360° Creative Applications

The projector can freely rotate at any angle vertically to aid with creative applications, allowing projection onto ceilings, walls, or angled signage.

360-degreeProjection



90° Portrait Mode

Portrait mode allows users to turn the projector 90 degrees to increase the vertical field of view and add more applications for projection mapping, staging, and advertising.

Portrait Mode



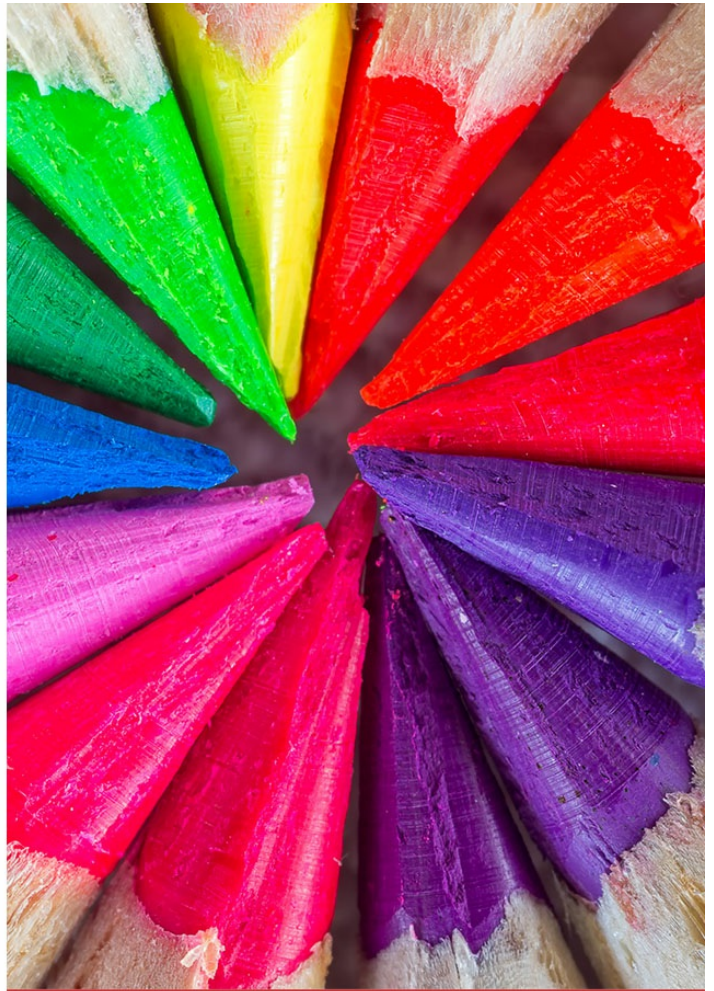
Amazing Colour Accuracy

ViewSonic's proprietary SuperColor™ Technology displays a wide colour range, ensuring that users enjoy true-to-life colour performance in both bright and dark environments without sacrificing image quality.

SuperColor™ Technology



Normal



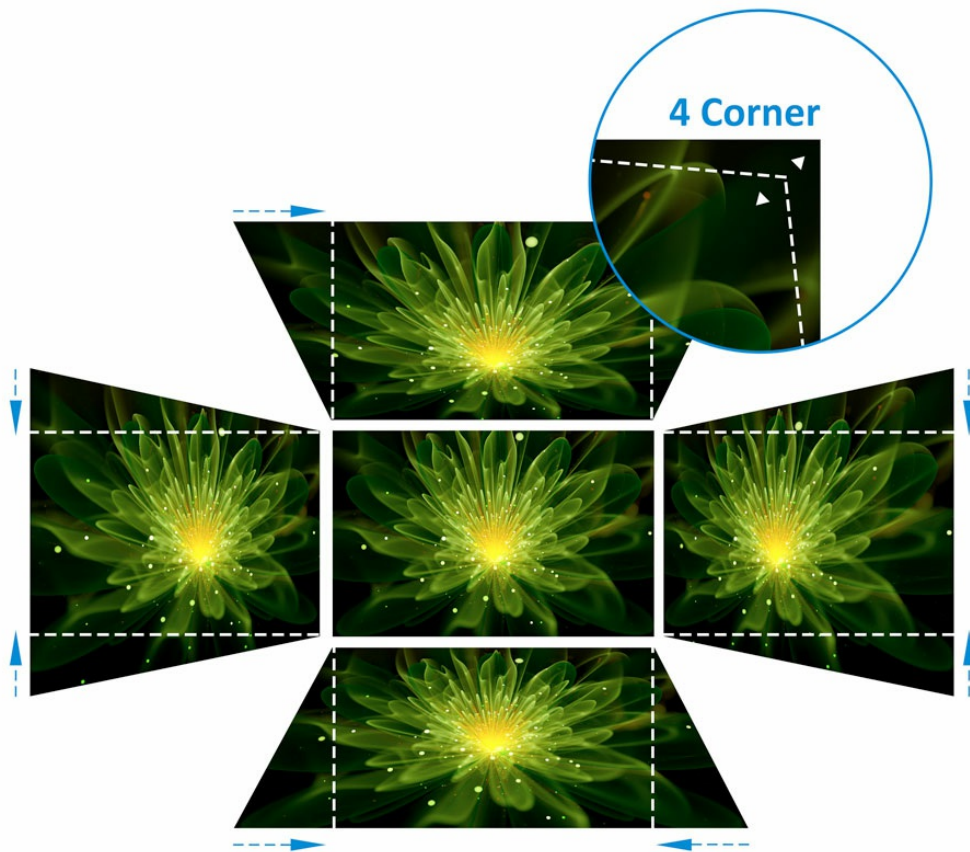
SuperColor™ Technology

Easy Image Adjustment

Horizontal and Vertical Keystone correction along with 4 corner adjustment features eliminate crooked or distorted images for a perfectly proportioned picture every time.

HV Keystone

4 Corner Adjustment



Network Management

This projector comes equipped with Crestron RoomView, AMX Control4 and ViewSonic vController, an easy-to-use network management tool.

LAN Control



Control4
Better. Together.

AMX

CRESTRON

Sealed Optical Engine with IP6X

The advanced sealed optical engine prevents dust and moisture from entering the projector and affecting the thermal system to ensure that the image quality and long lifespan are maintained.

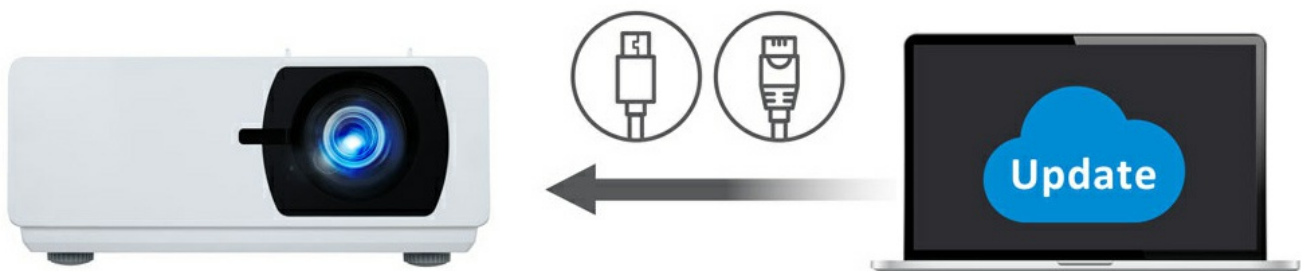
IP6X



A Simpler Way to Update Projector Software

ViewSonic Projector Software Update is available online and gives you the ability to keep your projector firmware up to date easily and conveniently; no need to take your projector in to a service center for software updates.

Projector Software Update



Go Lamp Free for the Environment

The lamp free, laser light projection source is more environmentally friendly, contributes to a mercury-free environment, and also promotes sustainable development.

Mercury-free



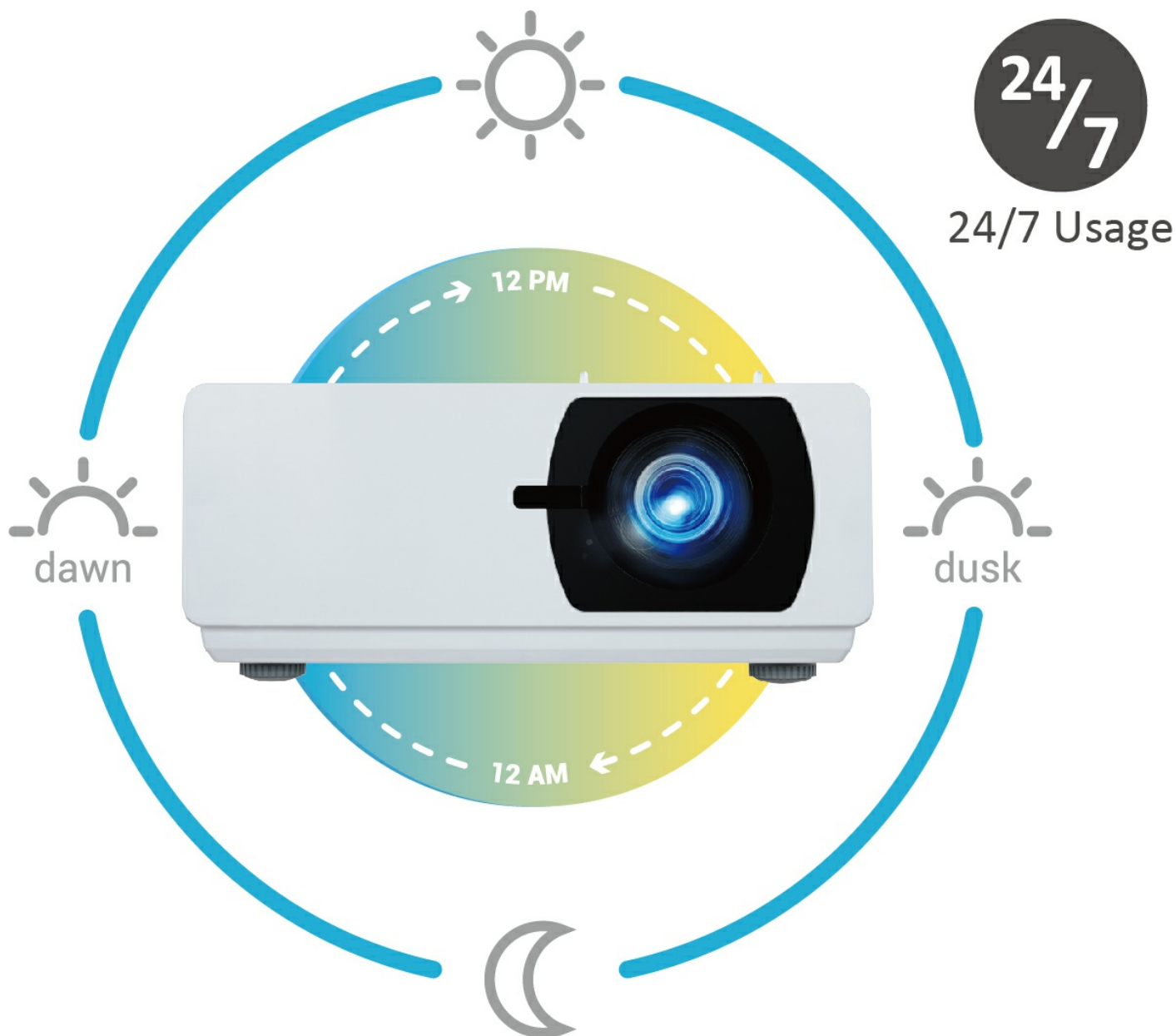
Eco Friendly



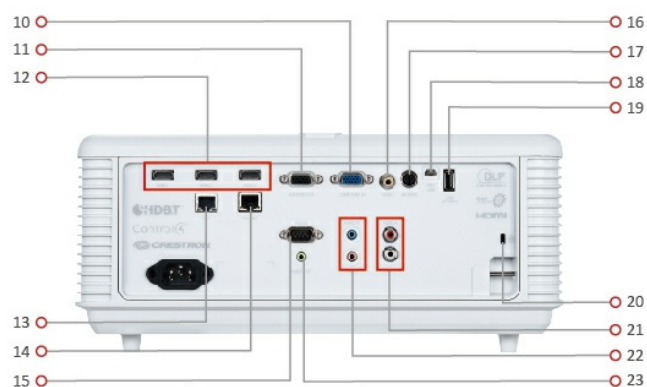
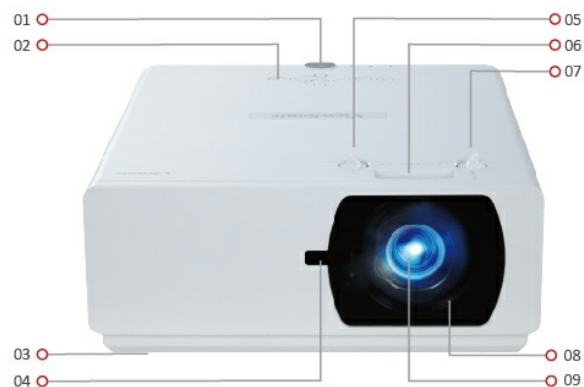
Non-stop 24/7 Operation

With an advanced cooling design, the LS900WU enables 24/7 operation without degradation of quality or performance, making the projector ideal for applications that require continuous projection.

24/7 Operation



Exterior & Rear I/O Connectors



1. Power key & Top IR
2. Keypad

3. Adjustment foot
4. Front IR
5. Horizontal lens shift adj.
6. Optical zoom 1.65X
7. Vertical lens shift adj.
8. Focus adjustment
9. Lens
10. Monitor out
11. Computer in
12. HDMI x 3
13. LAN (RJ45)
14. HDBaseT (RJ45)
15. RS232
16. Video
17. 3D sync (VESA)
18. Mini USB (Service)
19. USB Type A (5V/1.5A)
20. Kensington lock
21. Audio in (R/L)
22. Audio in / Mic in
23. Audio out



Technical Specifications

Specification	Projection System	0.67" WUXGA
	Native Resolution	1920x1200
	DMD Type	DC3
	Brightness	6000 ANSI Lumens
	Contrast Ratio with SuperEco Mode	3000000:1
	Display Colour	1.07 Billion Colours
	Light Source Type	Laser Phosphor system
	Light Source Life (Normal)	20000
	Light Source Life (SuperEco)	30000
	Lamp Watt	Laser Bank x 4
	Lens	F=2.45-3.13, f=17.23-27.9mm
	Projection Offset	130%+/-10%
	Throw Ratio	1.15-1.9
	Optical Zoom	1.65x
	Digital Zoom	1.0x-2.0x
	Image Size	50"-300"
	Throw Distance	1.24-7.43m (100"@2.48m)
	Keystone	H: +/-30° , V: +/-25°
	Lens Shift V. Range	Yes (+9.2%, -2.4%)
	Lens Shift H. Range	Yes (+2.5%, -2.5%)
	Audible Noise (Normal)	34dB
	Audible Noise (Eco)	32dB
	Input Lag	16ms
	Resolution Support	VGA(640 x 480) to WUXGA_RB(1920 x 1200) *RB-Reduced Blanking
	HDTV Compatibility	480i, 480p, 576i, 576p, 720p, 1080i, 1080p
	Video Compatibility	NTSC, PAL, SECAM
	Horizontal Frequency	15K-102KHz
	Vertical Scan Rate	23-120Hz
Input	Computer in (share with component)	1
	Composite	1
	HDMI	3 (HDMI 1.4/ HDCP 1.4)
	Audio-in (3.5mm)	1
	Audio-in (RCA R/L)	1
	Microphone in	1
	3D VESA (Sync)	1
	HDBaseT	1
	RJ45 Input	1 (LAN control)

Output	Monitor out	1
	Audio out (3.5mm)	1
	Speaker	5W x 2
	USB Type A (Power)	1 (5V / 1.5A)
Control	RS232 (DB 9-pin male)	1
	RJ45	1
	USB Type Mini B (Services)	1
Others	Power Supply Voltage	100-240V+/- 10%, 50/60Hz (AC in)
	Power Consumption	TBD
	Operating Temperature	0~40°C
	Net Weight	11.0kg
	Dimensions (WxDxH) with Adjustment Foot	360x440x161mm
	OSD Language	English, French, Spanish, Thai, Korean, German, Italian, Russian, Swedish, Dutch, Polish, Czech, T-Chinese, S-Chinese, Japanese, Turkish, Portuguese, Finnish, Indonesian, India, Arabic, Vietnamese, Total 22 languages
Standard Accessory	Power Cord	1
	VGA Cable	1
	Remote Control	1 (w/ laser pointer)
	QSG	1