

Cable Cubby Series

CABLE ACCESS ENCLOSURES



Sophisticated Cable Management for Tables & Podiums

- ▶ Accommodates AC power outlets, cable retractor modules, AV cables, and AAP™ AV Connectivity Modules
- ▶ Patented, modular design for fast assembly and serviceability
- ▶ Retractor, Cable Pass-Through, and AAP Brackets included
- ▶ AC and AC+USB power modules available for US, Europe, and other major world markets
- ▶ Choice of enclosure sizes and finishes to fit any room decor or furniture style
- ▶ Cables are stored neatly out of sight

Extron

Cable Cubby Series

Extron Cable Cubby® Series cable access enclosures are the AV industry's de facto standard for conference table AV connectivity, control, power, and cable management. These sophisticated yet durable, furniture-mountable enclosures blend seamlessly with any furniture and room décor. Whether open or closed, they virtually disappear into the surface. Cable Cubby Series enclosures are engineered for fast assembly and installation in the field. A simple, elegant integrated clamp system secures these versatile modular enclosures to the furniture surface without the need for tools or additional parts. Cable Cubby Series enclosures are available in a variety of sizes to best meet most needs.



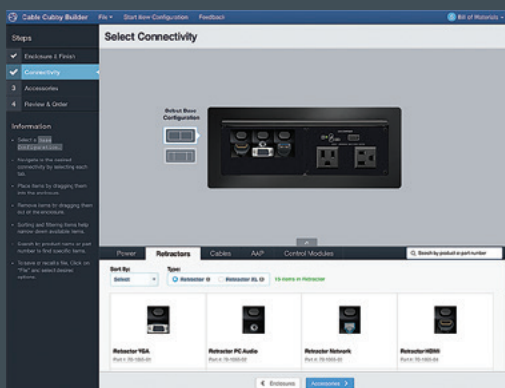
Power - Extron offers the most extensive selection of power modules in the industry. They are available as AC-only as well as AC with USB Type-A and/or USB Type-C® outlets for charging mobile devices such as laptops, smartphones, and tablets.



AV Connectivity - Whether you need AV or data connectors, the hundreds of Extron AAP AV Connectivity Modules means your options are nearly endless.



Control - Extron provides a vast array of control options compatible with Cable Cubby enclosures. Available modules include a comprehensive offering for audio, video, and signal control.



Cable Cubby Builder

The Extron Cable Cubby Builder is an interactive online tool for designing and customizing Cable Cubby Series cable access enclosures. After selecting the Cable Cubby enclosure and finish, an intuitive drag-and-drop interface makes it easy for users to add power, cables, Retractor modules, AAP modules, and installation accessories. It automatically assembles a Bill of Materials, and gives users an opportunity to review their configuration and make any last-minute changes before placing an order.

OVERVIEW

Patented modular design

For fast assembly and serviceability, AV connectivity can be installed or serviced from the top of the enclosure, after it is installed.



Supports a wide range of cable management applications

Cable Cubby Series cable access enclosures offer a variety of sizes and configurations to support your cable management application.

Choice of AC-only or AC+USB Power Modules

AC-only or AC+USB power modules are available for the US, Europe, and other major world markets. The available AC+USB modules feature one or two USB Type-A and/or USB Type-C power connectors for charging mobile devices.

Mounts virtually flush with the surface

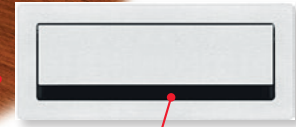
Ultra thin bezel and rounded corners provide an elegant mounting solution.

AV connectivity

Enclosures include brackets for mounting Retractor Series or Retractor Series XL cable retraction modules, AAP modules, or AV cables to reduce loose cables on and below the surface. Optional bracket kits allow the AC power module to be mounted in the center of the enclosure for additional flexibility in configuring AV connectivity. A professional cable management system below and on the surface is achieved.



Cable Cubby 1202



Choice of black anodized or brushed aluminum finish

The top surface of Cable Cubby Series enclosures is designed to blend seamlessly with modern furniture and room decor.

Low-profile lid with full width cable pass-through

Provides convenient access to AV cables and AC power, whether open or closed.

Integrated side clamps

A unique clamp mechanism secures the enclosure to the furniture surface without the need for tools or additional parts. Simply swivel the clamp into position and lock it in place.

Integrated lid damper

Lid dampers provide smooth, quiet operation, gently easing the lid into its open position.



Cable Cubby 1202



Cable Cubby 500

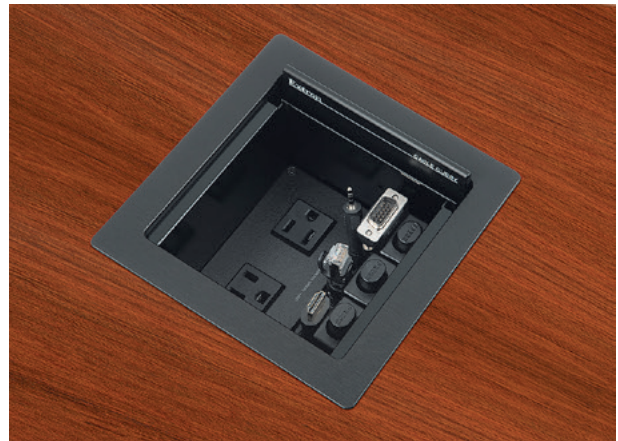
Cable Access Enclosure for AV Connectivity, Remote Control, and Power

Enclosure Type: Compact

Capacity: One power module +
One connectivity bracket

Features

- Accommodates one AC or AC+USB power module, plus three Retractor modules, four AV cables, or two AAP modules
- Includes one set of Retractor, Cable Pass-Through, and AAP brackets
- Cable Cubby 500 CCB features three raised buttons that provide convenient control of Extron switchers and other products with contact closure ports
- Choice of black or brushed aluminum finish
- Dimensions Cable Cubby 500: 6.38" W x 6.38" D (162 mm W x 162 mm D)
- Dimensions Cable Cubby 500 CCB: 6.38" W x 7.79" D (162 mm W x 198 mm D)



Cable Cubby 500



Cable Cubby 500 CCB

Model	Version Description	Part Number
Cable Cubby 500	Black-with US AC Power Module	60-1404-02
Cable Cubby 500	Black-AC Module Not Included	70-1045-02
Cable Cubby 500	Brushed Aluminum-AC Module Not Included	70-1045-08
Cable Cubby 500 CCB	Black with 3 Buttons-AC Module Not Included	70-1125-02
Routing Template	Routing Template for Cable Cubby 500	70-1048-80
Routing Template	Routing Template for Cable Cubby 500 CCB	70-1049-80

Cable Cubby 700

Cable Access Enclosure for AV Connectivity, Remote Control, and Power

Enclosure Type: Mid-size

Capacity: One power module +
Two connectivity brackets

Features

- Accommodates one AC or AC+USB power module, plus up to six Retractor modules, eight AV cables, or four AAP modules
- Includes two sets of Retractor, Cable Pass-Through, and AAP brackets
- Retractor, Cable Pass-Through, and AAP brackets can be combined with the enclosure to meet a variety of connectivity needs
- Choice of black or brushed aluminum finish
- Dimensions: 7.79" W x 6.38" D (198 mm W x 162 mm D)



Model	Version Description	Part Number
Cable Cubby 700	Black-with US AC Power Module	60-1405-02
Cable Cubby 700	Black-AC Module Not Included	70-1046-02
Cable Cubby 700	Brushed Aluminum-AC Module Not Included	70-1046-08
Routing Template	Routing Template for Cable Cubby 700	70-1049-80

Cable Cubby 1202

Cable Access Enclosure for AV Connectivity, Remote Control, and Power

Enclosure Type: Slim, low-profile

Capacity: One power module +
One connectivity bracket

Features

- Accommodates one AC or AC+USB power module, plus three Retractor modules, eight AV cables, or three AAP modules
- Includes one set of Retractor, Cable Pass-Through, and AAP brackets
- Slim enclosure is 2" (51 mm) shorter than previous model, making it ideal for conference tables, desks, lecterns, and other work areas where space is at a premium
- Optional Retractor and Cable Pass-Through Bracket Kits allow AV connectivity to be mounted at the outer edges of the enclosure
- Choice of black or brushed aluminum finish
- Dimensions: 10.57" W x 4.58" D (269 mm W x 116 mm D)



Model	Version Description	Part Number
Cable Cubby 1202	Black-with US AC Power Module	60-1707-02
Cable Cubby 1202	Black-AC Module Not Included	70-1184-02
Cable Cubby 1202	Brushed Aluminum-AC Module Not Included	70-1184-08
Routing Template	Routing Template for Cable Cubby 1202	70-1041-80

Cable Cubby 1402

Cable Access Enclosure for AV Connectivity, Remote Control, and Power

Enclosure Type: Double-sided, low-profile

Capacity: Two power modules +
Two connectivity brackets

Features

- Accommodates one AC or AC+USB power module, plus up to six Retractor modules, sixteen AV cables, or six AAP modules
- Includes two sets of Retractor, Cable Pass-Through, and AAP brackets
- Slim, double-sided enclosure is 2" (51 mm) shorter than previous model, making it ideal for conference tables, desks, lecterns, and other work areas where space is at a premium
- Optional Retractor and Cable Pass-Through Bracket Kits allow AV connectivity to be mounted at the outer edges of the enclosure
- Choice of black or brushed aluminum finish
- Dimensions: 10.32" W x 7.17" D x 6.50" H (26.2 cm W x 18.2 cm D x 16.5 cm H)



Model	Version Description	Part Number
Cable Cubby 1402	Black-with US AC Power Modules	60-1708-02
Cable Cubby 1402	Black-AC Module Not Included	70-1185-02
Cable Cubby 1402	Brushed Aluminum-AC Module Not Included	70-1185-08
Routing Template	Routing Template for Cable Cubby 1402	70-1042-80

CABLE CUBBY 650 UT



The **Cable Cubby 650 UT** is a modular, under-table mounted cable access enclosure for AV connectivity, remote control, and power. Its flexible, open design facilitates easy cable access for integration into high-end furniture with a professionally fabricated table-matching lid provided by the installing carpenter. Cable Cubby 650 UT enclosures can be ganged together for a nearly endless selection of AV connectivity options. It includes height-adjustable connectivity brackets for mounting three AAP AV Connectivity Modules or eight AV cables and three Extron Retractor cable retraction modules. Integrated mounting brackets accommodate any table top thickness. Optional AC and AC+USB Series power modules available for US, Europe, and other major world markets. The Cable Cubby 650 UT is available in a black finish.

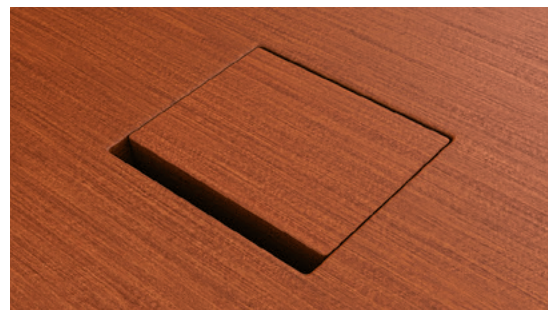
The enclosure's modular design allows cables and AAP modules to be installed or serviced from the top of the enclosure after it is installed. The included Cable Pass-Through Bracket features a unique, split-ring design that facilitates cable installation while eliminating the need for separate cable grommets. The optional Bracket Kit – Quad accommodates four AV cables each for a total of eight cables; sold separately. The optional Retractor Bracket Kit - Triple holds three cable retraction modules; Retractor Bracket Kit - Double holds four cable retraction modules. All brackets are height adjustable.

Key Features

- ▶ Subtle, under-table design compliments high end furniture and can be installed with or without a table-matching lid
- ▶ Accommodates an AC or AC+USB power module, plus up to three Retractor modules, eight AV cables, or three AAP modules
- ▶ Includes two sets of height-adjustable Retractor, Cable Pass-Through, and AAP brackets; Retractor modules, cables, and AAP modules sold separately
- ▶ Requires precision table cutting and professional carpentry skills for proper installation

GENERAL		
Mounting		
Furniture mount	Yes, underneath the furniture surface	
Enclosure type		
	Metal	
Enclosure dimensions		
Top plate (outer rim)	7.0" L x 6.5" W (178 mm L x 165 mm W)	
Surface cutout (inside rim)	5.0" L x 4.25" W (127 mm L x 108 mm W)	
Enclosure depth	4.0" H (102 mm H)	
Regulatory compliance		
Safety	c-UL*, UL*, CE	
Environmental	Complies with the appropriate requirements of RoHS	
Warranty		
	3 years parts and labor	
NOTE: * The UL listing for this product is only valid when the Cable Cubby contains the US AC power module.		
Model	Version Description	Part number
Cable Cubby 650 UT	Black Under-table Cable Access Enclosure	70-1183-01
Optional Accessories		
Model	Version Description	Part number
Retractor Bracket Kit - Double	For 2 Retractor Modules; Pair	70-1040-04
Retractor Bracket Kit - Triple	For 3 Retractor Modules	70-1039-04
Cable Bracket Kit - Quad	For 4 Cables; Pair	70-1040-03
CCM 155	For Flex55 Device Modules	70-1164-01
CableCover - Large	For Cable Cubby 650 UT	70-1080-02

For complete specifications, please go to www.extron.com
Specifications are subject to change without notice.



A custom, table-matching lid allows the unit to blend into the surface when closed; lid not included.



Enclosures can be ganged together for a nearly endless selection of AV connectivity.

CABLE CUBBY 100 & CABLE CUBBY 202

Cable Cubby 100



The Cable Cubby 100 is a cable access enclosure for AV connectivity and AC or USB power. Ideal for single-user applications, it has connectivity openings for two single-space MAAP™ Mini AV Connectivity Modules or three AV cables. The Cable Cubby 100 Switch Kit includes an integrated pushbutton switch for Show Me®, push to talk, or mute mic applications.

Key Features

- ▶ Powered models accommodate an AC power outlet or two USB power ports and two MAAP™ Mini AV Connectivity Modules or three AV cables
- ▶ Non-powered models accommodate up to four MAAP modules, or three AV cables and two MAAP modules
- ▶ Unique, split ring design allows cables to be installed or serviced from the top of the enclosure
- ▶ Fast installation with standard 4" (102 mm) round hole saw
- ▶ US model is UL/c-UL listed
- ▶ Non-US models are CE compliant

Model	Version Description	Part Number
Cable Cubby 100 US	One US AC	60-1592-01
Cable Cubby 100 UK	One UK AC	60-1592-02
Cable Cubby 100 EU	One EU AC	60-1592-03
Cable Cubby 100 FR	One France AC	60-1592-06
Cable Cubby 100 MULTI	One Multi-Region AC	60-1592-10
Cable Cubby 100 USB	Two USB Power	60-1592-12
Cable Cubby 100	Power Module Not Included	70-1109-02
Optional Accessories		
Cable Cubby 100 Switch Kit	(1) LED for Cable Cubby US, USB, and Non-Powered	70-1111-02
CableCover - Small	For Cable Cubby 100	70-1080-03

Cable Cubby 202



The Extron Cable Cubby 202 is a compact cable access enclosure with one fixed, unswitched AC outlet and a removable Cable Pass-Through Bracket that accommodates up to four AV cables. Optional bracket kits are available to support Retractor Series cable retraction modules or AAP™ AV Connectivity Modules. The tilt-up lid is held open by a small magnetic catch, facilitating use of the enclosure in both horizontal and vertical mounting orientations in lecterns.

Key Features

- ▶ Includes one AC power outlet and Cable Pass-Through Bracket for up to four AV cables
- ▶ Unique, split-ring bracket design allows four cables to be installed or serviced from the top of the enclosure
- ▶ Tilt-up lid and full-width cable pass-through for convenient access to AV and power
- ▶ A magnetic catch holds the lid open in any mounting orientation
- ▶ US version accommodates one MAAP™ Mini AV Connectivity Module
- ▶ US model is UL/c-UL listed
- ▶ Non-US models are CE compliant

Model	Version Description	Part number
Cable Cubby 202 US	One US Outlet	60-1399-02
Cable Cubby 202 EU	One EU Outlet	60-1400-02
Cable Cubby 202 FR	One France Outlet	60-1401-02
Cable Cubby 202 AUS	One AUS Outlet	60-1402-02
Cable Cubby 202 MULTI	One Multi-Region Outlet	60-1403-02
Cable Cubby 202 UK	One UK Outlet	60-1425-02
Optional Accessories		
Model	Version Description	Part number
Cable Cubby 202 AAP Bracket	Holds Two AAP Modules	70-1043-01
Cable Cubby 202 Retractor Bracket	Holds Three Retractor Modules	70-1043-02
Installation Routing Template	For Cable Cubby 202	70-1044-80

CABLE CUBBY WITH CONTROL

EBP 1200C

Cable Cubby Enclosure with eBUS Button Panel

Features

- Fully customizable button panel integrates easily with an Extron Pro Series control system
- Two eBUS® ports allow for quick system expansion and upgrades
- Standard connectivity brackets included
- Accommodates one AC or AC+USB Series power module, plus three Retractor modules, eight AV cables, and/or three AAP AV Connectivity Modules; sold separately



Model	Version Description	Part Number
EBP 1200C	eBUS Cable Cubby - Black, AC Module Not Included	60-1632-02
EBP 1200C	eBUS Cable Cubby - Br Alum, AC Module Not Included	60-1632-08

NBP 1200C

Cable Cubby Enclosure with Network Button Panel

Features

- Fully customizable Network Button Panel integrates easily with an Extron Pro Series control system or HC 400 Series products
- Ten backlit, soft-touch buttons that can be customized using Extron's Custom Button Builder
- Standard connectivity brackets included
- Accommodates one AC or AC+USB Series power module, plus three Retractor modules, eight AV cables, and/or three AAP AV Connectivity Modules; sold separately



Model	Version Description	Part Number
NBP 1200C	NBP Cable Cubby - Black, AC Module Not Included	60-1835-01
NBP 1200C	NBP Cable Cubby - Br Alum, AC Module Not Included	60-1835-08

TLP Pro 525C

5" Cable Cubby TouchLink Pro Touchpanel

Features

- 5" capacitive flip-up touchscreen with 800x480 resolution and 24-bit color depth
- Tough Gorilla Glass® screen is scratch and smudge resistant
- Standard connectivity brackets included
- Accommodates one AC or AC+USB Series power module, plus two Retractor modules, five AV cables, and/or two MAAP Mini AV Connectivity Modules; sold separately



Model	Version Description	Part Number
TLP Pro 525C	Black - w/o AC Module	60-1560-02
TLP Pro 525C NC	Black - w/o AC Module, No Camera	60-1560-12

TLP Pro 725C

7" Cable Cubby TouchLink Pro Touchpanel

Features

- 7" capacitive flip-up touchscreen with 1024x600 resolution and 24-bit color depth
- Tough Gorilla Glass screen is scratch and smudge resistant
- Standard connectivity brackets included
- Accommodates one AC or AC+USB Series power module, plus three Retractor modules, eight AV cables, or three AAP AV Connectivity Modules; sold separately



Model	Version Description	Part Number
TLP Pro 725C	Black - w/o AC Module	60-1564-02
TLP Pro 725C NC	Black - w/o AC Module, No Camera	60-1564-12

AC AND AC+USB POWER MODULES

The **Extron Cable Cubby Series** power modules are available with discrete AC power outlets for the US, Europe, and other major world markets. Depending on model, each features at least one unswitched AC, and individual or combinations of AC, USB Type-C, and/or USB Type-A power outlets. The USB ports provide power for charging mobile devices, such as laptops, smartphones, and tablets. AC and AC+USB US power modules feature an internal Extron Everlast™ power supply whilst all USB non-US models include an Extron external stand-alone power supply that meets the Level VI standard for energy efficiency and a ZipClip Mounting Kit. ZipClip® provides secure mounting of Extron power supplies onto most surfaces, including under tables and inside lecterns.



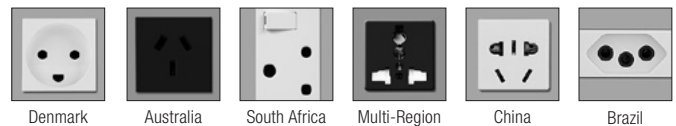
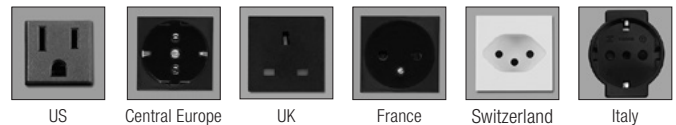
AC+USB 311 US

Common Features

- ▶ For use with Cable Cubby enclosures
- ▶ Features one or two unswitched AC power outlets for US, Europe, and other major world markets
- ▶ Available Multi-Region AC outlet is compatible with a variety of AC plug types
- ▶ Includes an internal or external highly efficient Extron Everlast™ power supply, based on model
- ▶ US modules are UL/c-UL listed
- ▶ All modules are CE compliant

Unique Features

	AC Outlets	USB Outlets	USB Power
AC 100 Series			
US	2	N/A	N/A
Non-US	2	N/A	N/A
AC+USB 200 Series			
US	2	2 USB Type-A	Up to 3.0 A / 15 W
Non-US	1	2 USB Type-A	Up to 4.0 A / 20 W
AC+USB 300 Series			
US	2	1 USB Type-A 1 USB Type-C	Delivers up to 10 W Delivers up to 45 W Combined total of up to 55 W
Non-US	1	1 USB Type-A 1 USB Type-C	Delivers up to 10 W Delivers up to 45 W Combined total of up to 47.5 W



AC 102 US



AC+USB 212 EU



AC+USB 311 UK



AC 100 Series			AC+USB 200 Series		AC+USB 300 Series	
Outlet	Version Description	Part Number	Version Description	Part Number	Version Description	Part Number
US (Cord)	(2) US Outlets	60-1385-01	US (2) AC & (2) USB Outlets w Integrated PS	60-1697-01	US (2) AC, (1) USB-C, & (1) USB-A Outlets w Integrated PS	60-1782-01
US (Conduit)	(2) US Outlets with 6' (1.83 m) Conduit	60-1385-20	US (2) AC & (2) USB Outlets w Integrated PS	60-1697-20	US (2) AC, (1) USB-C, & (1) USB-A Outlets w Integrated PS	60-1782-20
Europe	(2) Europe Outlets	60-1385-03	Europe (1) AC & (2) USB Outlets	60-1384-03	Europe (1) AC, (1) USB-C, & (1) USB-A Outlets	60-1782-03
France	(2) France Outlets	60-1385-06	France (1) AC & (2) USB Outlets	60-1384-06	France (1) AC, (1) USB-C, & (1) USB-A Outlets	60-1782-06
Italy	(2) Italy Outlets	60-1385-07	Italy (1) AC & (2) USB Outlets	60-1384-07		
Denmark	(2) Denmark Outlets	60-1385-09	Denmark (1) AC & (2) USB Outlets	60-1384-09		
Multi	(2) Multi-Region Outlets	60-1385-10	Multi-Region (1) AC & (2) USB Outlets	60-1384-10	Multi-Region (1) AC, (1) USB-C & (1) USB-A Outlets	60-1782-10
Australia	(2) Australia Outlets	60-1385-04	Australia (1) AC & (2) USB Outlets	60-1384-04		
South Africa	(1) South Africa Outlet	60-1385-08				
Switzerland	(2) Switzerland Outlets	60-1385-05	Switzerland (1) AC & (2) USB Outlets	60-1384-05		
UK	(2) UK Outlets	60-1385-02	UK (1) AC & (2) USB Outlets	60-1384-02	UK (1) AC, (1) USB-C, & (1) USB-A Outlets	60-1782-02
China	(2) China Outlets	60-1385-11	China (1) AC & (2) USB Outlets	60-1384-11		
Brazil	(2) Brazil Outlets	60-1385-13				
Japan	(2) Edison Outlets - PSE	60-1385-12				

RETRACTOR SERIES

The Extron **Retractor** is a patented, variable-speed cable retraction and management system that works with Cable Cubby cable access enclosures. Retractor modules support most AV and data signal types, as well as DC and USB power to compatible laptops and mobile devices. Cables extend up to five feet (152 cm) and are held securely in place at the desired length. Cables retract at the press of a button, with integrator-adjustable retraction speed control for smooth operation in both horizontal and vertical mounting orientations. Retractor modules are covered by Extron's three-year parts and labor warranty, which includes the pre-installed cable assembly.



Common Features

- ▶ Holds cable securely in place at a user-defined length
- ▶ Simple push-button release retracts cable after use
- ▶ Flexible installation options
- ▶ Retractor DC extends DC power for many Dell, HP, and Compaq PCs, while Lenovo DC is compatible with select Lenovo laptops
- ▶ Engineered for long life and reliability, and tested to exceed 7,500 cable extension and retraction cycles

Available Retractor Connector Types



Retractor Series Cable Retraction System

Unique Features

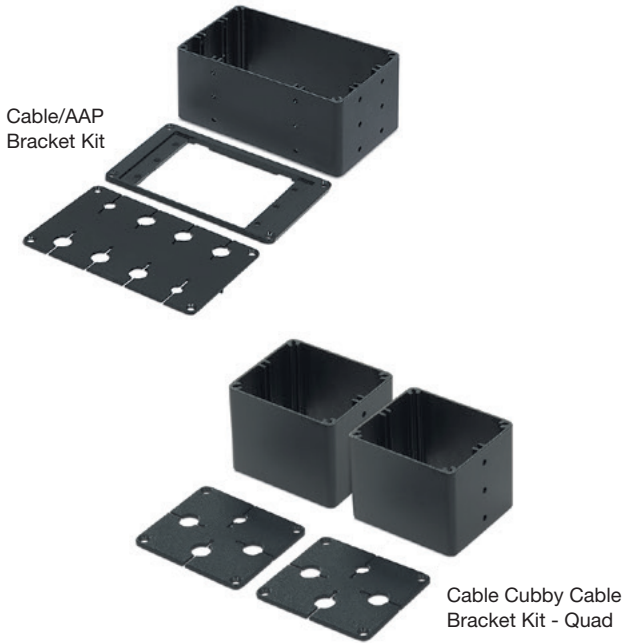
- Cables extend up to three feet (90 cm)
- Provides six-foot (1.8-meter) pigtail for connecting to other AV products

Retractor Series XL Extended Length Cable Retraction System

Unique Features

- Cables extend up to five feet (152 cm)
- Provides four-foot (1.2 meter) pigtail for connecting to other AV products

Retractor Series			Retractor Series XL		
Type	Version Description	Part Number	Version Description	Part Number	Part Number
VGA	VGA; 3 feet (90 cm)	70-1065-01	VGA; 5 feet (152 cm)		70-1066-01
PC Audio	3.5 mm Stereo Audio; 3 feet (90 cm)	70-1065-02	3.5 mm Stereo Audio; 5 feet (152 cm)		70-1066-02
Network	Network CAT6; 3 feet (90 cm)	70-1065-03	Network CAT6; 5 feet (152 cm)		70-1066-03
HDMI	HDMI; 3 feet (90 cm)	70-1065-04	HDMI; 5 feet (152 cm)		70-1066-04
USB 2.0	USB 2.0 Type-A to USB Type-A; 3 feet (90 cm)	70-1065-05	USB 2.0 Type-A to USB Type-A; 5 feet (152 cm)		70-1066-05
USB 3.0	USB 3.0 Type-A to USB Type-B; 3 feet (90 cm)	70-1065-06			
Mini DisplayPort-DisplayPort	Mini DisplayPort to DisplayPort; 3 feet (90 cm)	70-1065-18	Mini DisplayPort to DisplayPort; 5 feet (152 cm)		70-1066-18
Mini DisplayPort-HDMI	4K Mini DisplayPort to HDMI; 3 feet (90 cm)	70-1065-44	4K Mini DisplayPort to HDMI; 5 feet (152 cm)		70-1066-44
DisplayPort-HDMI	4K DisplayPort to HDMI; 3 feet (90 cm)	70-1065-43	4K DisplayPort to HDMI; 5 feet (152 cm)		70-1066-43
DisplayPort	DisplayPort; 3 feet (90 cm)	70-1065-07	DisplayPort; 5 feet (152 cm)		70-1066-07
DC	DC Power Extension: Dell, HP, other PCs; 3 ft/90cm	70-1065-10	DC Power Extension: Dell, HP, other PCs; 5ft/152cm		70-1066-10
Lenovo DC	Lenovo DC Power Extension; 3 feet (90 cm)	70-1065-09	Lenovo DC Power Extension; 5 feet (152 cm)		70-1066-09
VGA-A	VGA M-M and 3.5 mm Stereo; 3 feet (90 cm)	70-1065-11	VGA M-M and Stereo Audio; 5 feet (152 cm)		70-1066-11
USB-C Power	USB-C Power; 3 feet (90 cm)	70-1065-50	USB-C Power; 5 feet (152 cm)		70-1066-50
USB-C - HDMI	4K USB-C to HDMI; 3 feet (90 cm)	70-1065-51	4K USB-C to HDMI; 5 feet (152 cm)		70-1066-51
USB-C - DisplayPort	USB-C to DisplayPort; 3 feet (90 cm)	70-1065-52	USB-C to DisplayPort; 5 feet (152 cm)		70-1066-52
Filler Module	With Blank & Cable Pass-through Plates	70-1065-35	With Blank & Cable Pass-through Plates		70-1065-35
Horizontal Mounting Bracket Kit	For Horizontal Mounting Applications	70-678-00	For Horizontal Mounting Applications		70-678-00



Cable Cubby Connectivity Bracket Kits Supplemental AV Connectivity Brackets for Cable Cubby Enclosures

Cable Cubby Connectivity Bracket Kits provide additional flexibility when configuring most Cable Cubby, EBP 1200C, NBP 1200C, and select TouchLink cable access enclosures for a custom solution. Five kits are available to meet a variety of enclosure AV connectivity and power needs. These optional kits are compatible with Cable Cubby 500 through Cable Cubby 1402 enclosures. They are excellent when Retractor, AAP, or power modules are required in specific locations or for integrating a variety of modules into an enclosure's corners.

Model	Version Description	Part Number
Cable/AAP/Retractor Bracket Kit	4 AV cables or 2 AAP & 3 Retractor, CC500/700	70-1039-06
Cable/AAP Bracket Kit	8 AV cables or 3 AAP, all CC Series	70-1039-03
Cable Bracket Kit - Quad	4 AV cables, 650 UT/1202/1402, EBP/NBP 1200C; pair	70-1040-03
Retractor Bracket Kit - Double	2 Retractor, 650 UT/1202/1402, EBP/NBP 1200C; pair	70-1040-04
Retractor Bracket Kit - Triple	3 Retractor, 650 UT/1202/1402, EBP/NBP 1200C	70-1039-04



Cable Cubby Retractor Bracket Kit - Triple



Cable Cubby Retractor Bracket Kit - Double



CableCover Under-Table Cable Bag for Cable Cubby Enclosures

Extron CableCover™ is a durable, fitted bag that mounts below most Cable Cubby, EBP 1200C, NBP 1200C, and select TouchLink cable access enclosures. It improves under-table cable management and aesthetics, minimizes cable tangles, and prevents accidental disconnections. CableCover provides ample room for up to eight AV cables or six standard Extron cable retraction modules. Pass-through openings at the top and bottom of the bag facilitate cable installation and connection with both surface- and floor-mounted AV products.

A covered exterior channel provides tie-down openings for cables and Extron PS Series power supply. CableCover is available in two sizes, CableCover - Large, and CableCover - Small. Available in black; all mounting hardware included.

Model	Version Description	Part Number
CableCover - Large	For Select High Capacity CC, EBP, NBP & TLP	70-1080-02
CableCover - Small	For Cable Cubby 100, 202, 500/500 CCB	70-1080-03

Model	Capacity	Notes
CableCover - Small		
Cable Cubby 100	3 AV Cables	
Cable Cubby 200/202	3 AV Cables or 3 Retractor Modules	
Cable Cubby 500/500 CCB	8 AV Cables or 3 Retractor Modules	
CableCover - Large		
Cable Cubby 650 UT	8 AV Cables or 4 Retractor Modules	Incompatible if expanded
Cable Cubby 700	8 AV Cables or 6 Retractor Modules	
Cable Cubby 800	8 AV Cables or 3 Retractor Modules	
Cable Cubby 1202	8 AV Cables or 3 Retractor Modules	
Cable Cubby 1402	8 AV Cables or 3 Retractor Modules	Requires 2; 1 per side
EBP 1200C	8 AV Cables or 3 Retractor Modules	
NBP 1200C	8 AV Cables or 3 Retractor Modules	
TLP Pro 525C	8 AV Cables or 3 Retractor Modules	

SPECIFICATIONS

Cable Cubby 500, 500 CCB, & 700

SWITCH CONTACT CLOSURE – CABLE CUBBY 500 CCB ONLY	
Quantity/type	(3) momentary single pole, double throw switch
Connectors	(3) 5 pole, 3.5 mm captive screw connector on 4" pigtail
LED color	Blue
NOTE: Each switch can be used to select an input on a connected switcher with contact closure ports. See the Cable Cubby 500 and 700 Installation Guide for details.	
GENERAL	
Enclosure dimensions	
Cable Cubby 500	
Top plate (outer rim)	6.38" W x 6.38" D (162 mm W x 162 mm D)
Surface cutout (inside rim)	5.75" W x 5.75" D (146 mm W x 146 mm D)
Cable Cubby 700	
Top plate (outer rim)	7.79" W x 6.38" D (198 mm W x 162 mm D)
Surface cutout (inside rim)	7.13" W x 5.75" D (181 mm W x 146 mm D)
Cable Cubby 500 CCB	
Top plate (outer rim)	6.38" W x 7.79" D (162 mm W x 198 mm D)
Surface cutout (inside rim)	5.75" W x 7.13" D (146 mm W x 181 mm D)
Mounting	Furniture mount
Min./max. table thickness	0.50" to 2.50" (13 mm to 63 mm)
Enclosure type	Metal
Regulatory compliance	CE, RoHS, WEEE
US configuration*	UL, c-UL
Product warranty	3 years parts and labor
NOTE: *The UL listing is only valid when the Cable Cubby contains the US AC power module.	

Cable Cubby 500 and 700
Side View

Cable Cubby 500
Front View

Cable Cubby 700
Front View

Cable Cubby 500 CCB
Side View

Cable Cubby 500 CCB
Front View

Cable Cubby 1202 & 1402

GENERAL	
Power supply (optional)	
US AC module	125 VAC, 50-60 Hz, 12 A max total
Mounting	Furniture mount
Min./max. table thickness	0.50" to 2.50" (13 mm to 63 mm)
Enclosure type	Metal
Enclosure dimensions	
Cable Cubby 1202	
Top plate (outer rim)	10.57" W x 4.58" D (269 mm W x 116 mm D)
Surface cutout (inside rim)	10.00" W x 4.00" D (254 mm W x 102 mm D)
Enclosure depth	4.46" H (113 mm H)
Cable Cubby 1402	
Top plate (outer rim)	10.57" W x 7.42" D (269 mm W x 189 mm D)
Surface cutout (inside rim)	10.00" W x 6.75" D (254 mm W x 172 mm D)
Enclosure depth	4.46" H (113 mm H)
Regulatory compliance	CE, RoHS, WEEE
US configuration*	UL, c-UL
Product warranty	3 years parts and labor
NOTE: *The UL listing is only valid when the Cable Cubby contains the US AC power module.	

Cable Cubby 1202 and 1402
Front View

Cable Cubby 1202
Side View

Cable Cubby 1402
Side View

Cable Cubby 1402

Cable Cubby 1202

WORLDWIDE SALES OFFICES

Anaheim • Raleigh • Silicon Valley • Dallas • New York • Washington, DC • Toronto • Mexico City • Paris • London
 Frankfurt • Madrid • Stockholm • Amersfoort • Moscow • Dubai • Johannesburg • Tel Aviv • Sydney • Melbourne
 Bangalore • Mumbai • New Delhi • Singapore • Seoul • Shanghai • Beijing • Hong Kong • Tokyo

www.extron.com