



- UFT (Ultra Fine Touch) Technology
- myViewBoard™ digital whiteboard software
- ViewBoard® Cast 4-way split screen content sharing software
- SmartPort™ shared front USB ports for internal & external PCs
- 2.1 Stereo sound with built-in subwoofer

The ViewBoard® IFP50-2 series embraces UFT (Ultra Fine Touch) Technology to offer more precise writing and faster processing time than traditional IR panels. Smooth, dual-pen writing with our new, slim 3mm pens enables groups of teachers and students to work efficiently on any detailed tasks that require the use of accurate, fine-tipped pens. The ViewBoard® IFP50-2 series is designed with a slim bezel to broaden your viewing experience so that even at the edge of the panel you can write clearly and confidently. Integrated myViewBoard™ digital whiteboard software allows users to collaborate on the go, while ViewBoard® Cast provides 4-way, split-screen content sharing.

## UFT Technology

Ultra Fine Touch Technology produces a lag-free, pen-on-paper writing experience. Writing accuracy is greatly improved and student-teacher interaction flows more naturally thanks to real-time response rates, dual-pen recognition and our new 3mm tipped pens.



3mm  
diameter pen

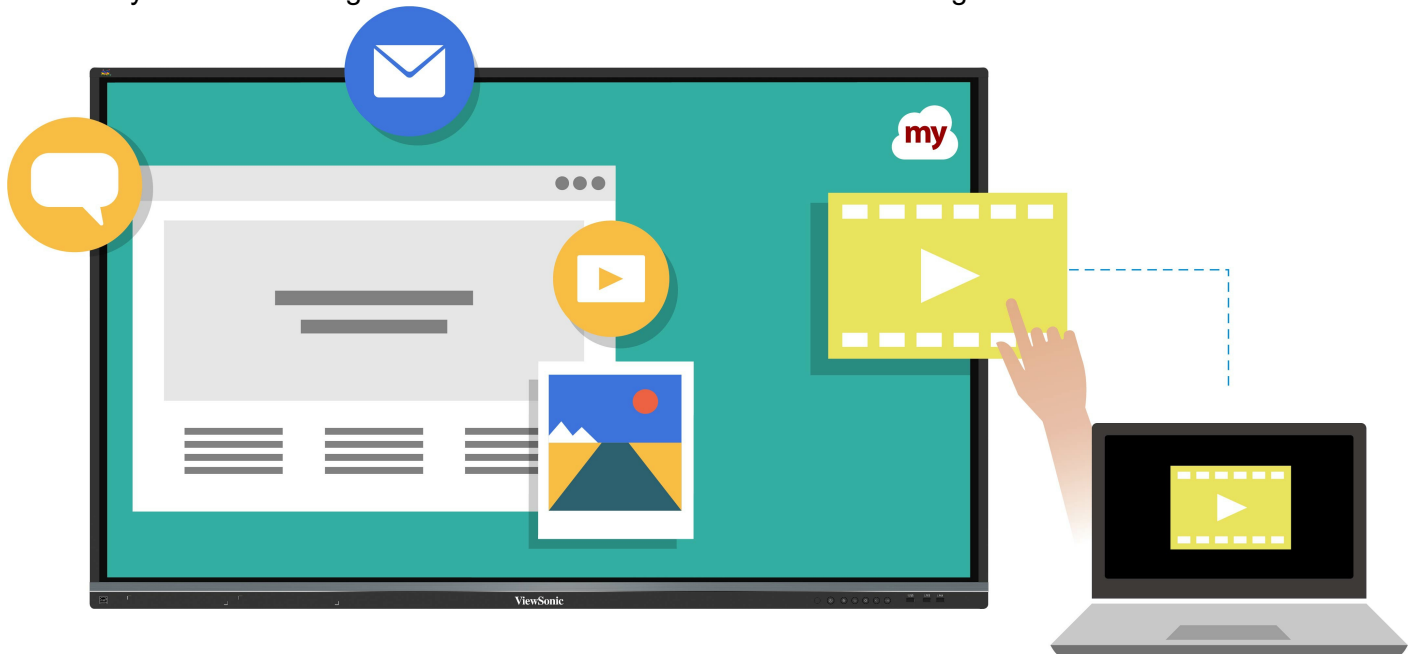
## Dual-Pen

Automatically detect pen diameter (8mm & 3mm) and write simultaneously with different colours and thicknesses.



## Full Native Performance on embedded OS

Built-in myViewBoard™ digital whiteboard software to collaborate on the go.



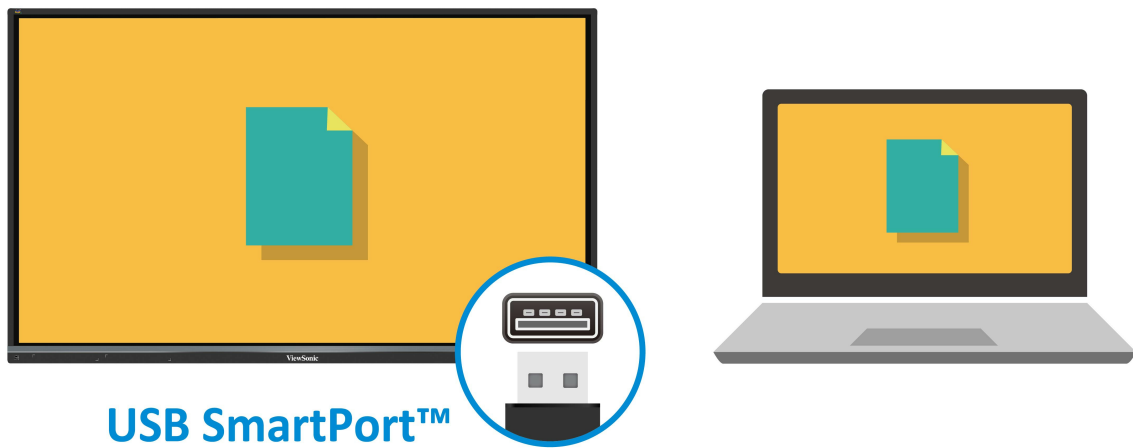
## 4-way Split Screen

4-way split screen content sharing with built-in ViewBoard® Cast software.



## Shared USB Ports

SmartPort™ shared front USB ports for internal & external PCs.



## Stereo Sound

2.1 Stereo sound with a built-in subwoofer.



## Faster Internet

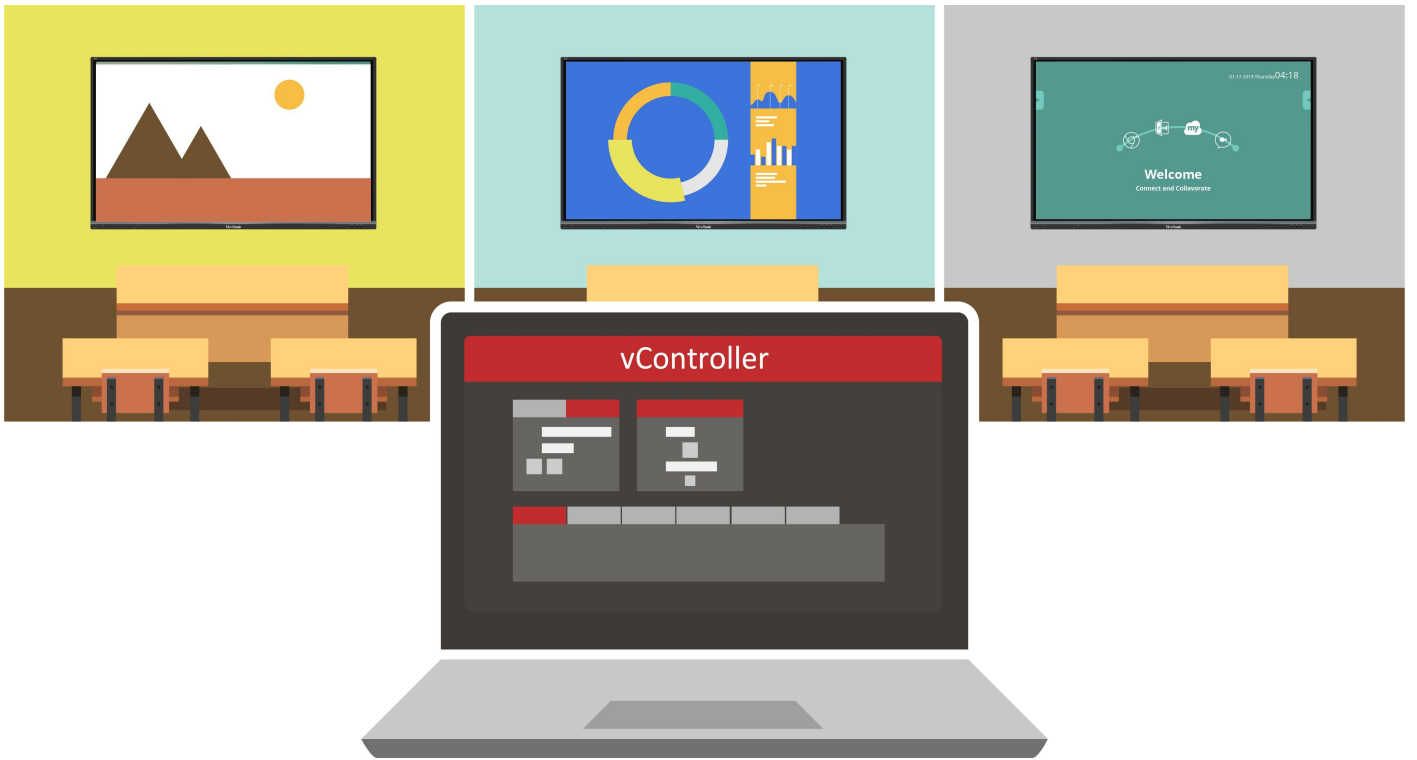
GigaLAN provides a faster, more powerful internet connection.

# GigaLAN



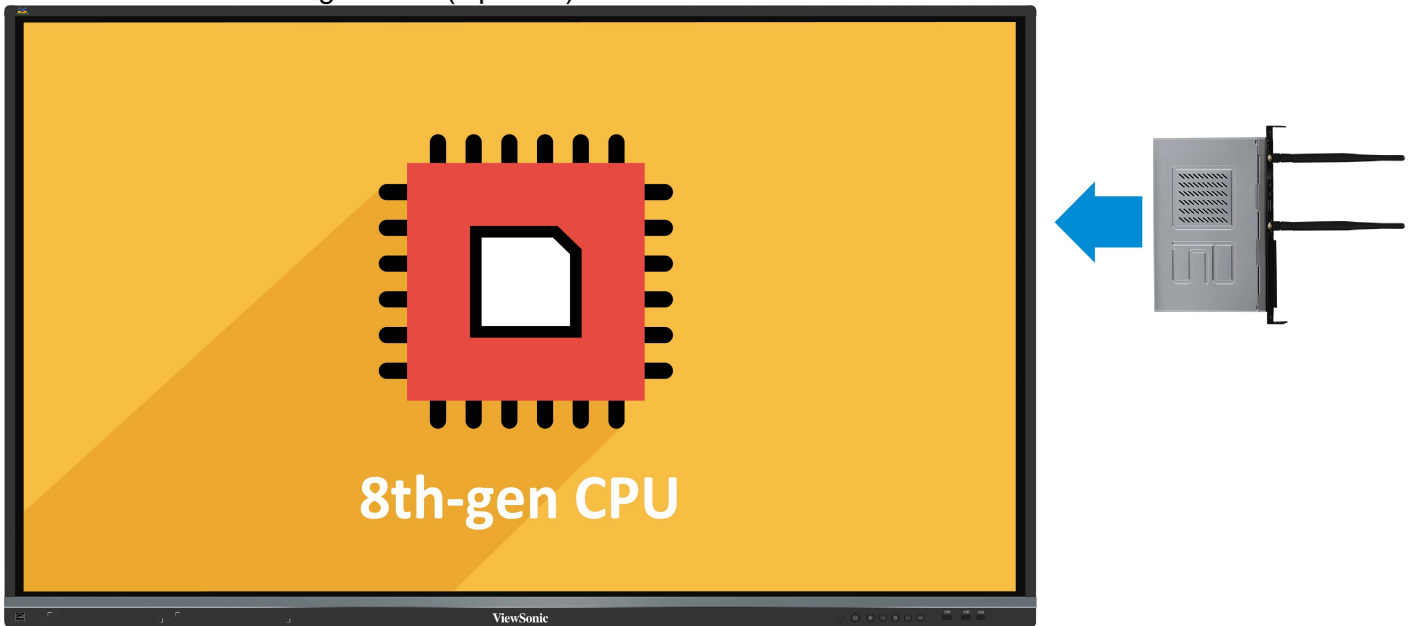
## Remote Control

Built-in RS232 port and vController software for remote control.



## Slot-in PC

Slot-in PC with Intel 8th-gen CPU (Optional).

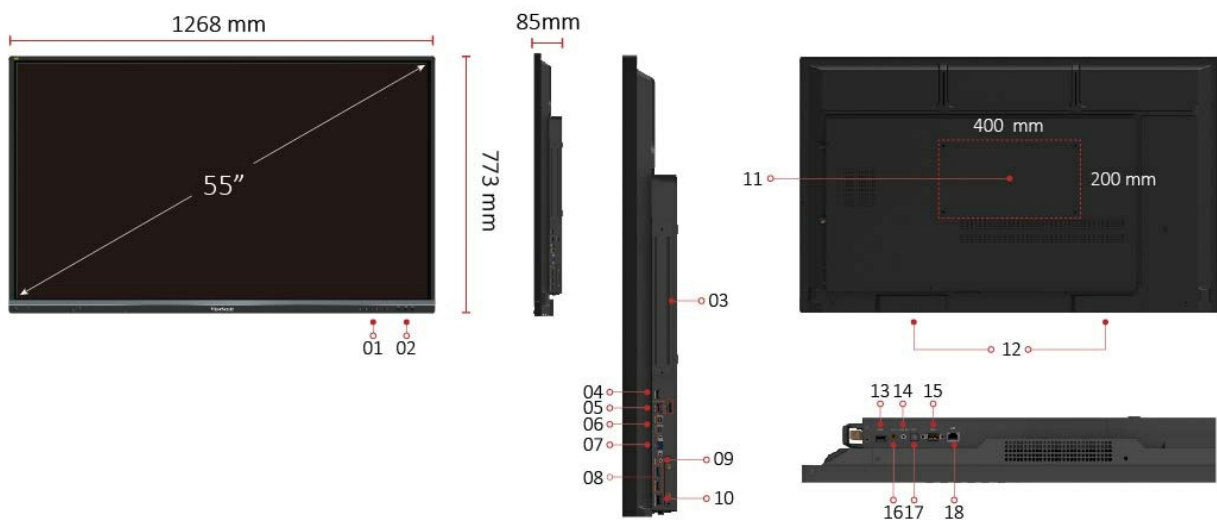


## Web Camera

Top-mounted 1080p web camera (Optional).



## I/O Ports



1. MENU CONTROLS
2. USB X 3
3. Intel Unite® Certified OPS Slot
4. HDMI OUT
5. USB 3.0
6. TOUCH X 2
7. VGA
8. HDMI IN X 2
9. AUDIO IN
10. CAMERA PORT
11. VESA® WALL Mount 400x200 mm

12. INTERNAL SPEAKERS
13. USB 2.0
14. AUDIO OUT
15. RS232
16. AV IN
17. SPDIF
18. LAN

## Technical Specifications

<b>Display</b>	<b>Panel Size</b>	55"
	<b>Type/Tech</b>	TFT LCD Module with DLED Backlight.
	<b>Display Area (mm)</b>	1209.6(H) x 680.4 (V) (54.64" diagonal)
	<b>Aspect Ratio</b>	16:9
	<b>Native Resolution</b>	UHD 3840x2160(Pixels)
	<b>Colours</b>	1.07B colours (10bit)
	<b>Brightness</b>	350 nits (typ.) 300 nits (min.)
	<b>Contrast Ratio</b>	1200:1 Typ.
	<b>Response Time</b>	9ms
	<b>Viewing Angles</b>	H = 178, V = 178 typ.
	<b>Backlight Life</b>	30,000 Hours (Min)
	<b>Surface Treatment</b>	Anti-Glare
	<b>Bezel</b>	Slim
<b>Orientation</b>	Landscape	
<b>Platform</b>	<b>Processor</b>	ARM Cortex A73 dual-core 1.2GHz
	<b>RAM</b>	2GB DDR4
	<b>Storage</b>	16GB
<b>Touch</b>	<b>Type/ Tech</b>	IR Recognition
	<b>Touch Resolution</b>	32767 x 32767
	<b>Touch Point</b>	20 points touch, 10 points writing
<b>INPUT</b>	<b>HDMI</b>	2.0 x3 (3840x2160 @60Hz)
	<b>RGB / VGA</b>	x1
	<b>Audio</b>	x1 (PC audio in)
	<b>CVBS</b>	x1
	<b>RS232</b>	x1
	<b>OPS</b>	x1 PC Slot (proprietary)
<b>OUTPUT</b>	<b>HDMI</b>	x1
	<b>Audio</b>	x1 (Earphone out)
	<b>SPDIF</b>	1(optical)
	<b>RS232</b>	x1
<b>LAN</b>	<b>RJ45</b>	x1
<b>USB</b>	<b>Type A</b>	USB 2.0 x4(including 2 USB port in front) USB 3.0 x2(including 1 USB port in front)
	<b>Type B</b>	x2, for touch
<b>SPEAKERS</b>	<b>SPEAKERS</b>	10W x 2 + 15W x 1
<b>Camera plate on top for screw-in webcam installation</b>	<b>Camera plate on top for screw-in webcam installation</b>	Yes



<b>COMPATIBILITY</b>	<b>RGB PC/HDMI PC</b>	Refer to timing table
	<b>CVBS</b>	480i
	<b>HDMI</b>	3840x2160
<b>Embedded OS</b>	<b>Embedded OS</b>	Android 7
<b>USB SUPPORTED FILE FORMAT</b>	<b>USB SUPPORTED FILE FORMAT</b>	Picture - BMP, JPEG, PNG
		Video - Codec: MPEG1, MPEG2, MPEG2-PS, MPEG4, MKV Container: MPG, MP4, MOV, VOB, DAT, MKV
		Audio - Codec: AAC, HEAAC, MPEG1, MPEG2 Container: AAC, M4A, MP3
<b>Bundle Software</b>	<b>Basic Annotation Software</b>	myViewBoard / vBoard Lite
	<b>Pro Annotation Software</b>	myViewBoard for windows (Embedded in Windows Slot-in PC)
	<b>Wireless Presentation with Touch Feedback: Viewboard Cast</b>	yes
	<b>Zoom</b>	Yes
	<b>ViewSonic Launcher</b>	Embedded
<b>Special Features</b>	<b>All-in-one USB port (combine Windows/Android USB port; no need to distinguish them anymore)</b>	Front "SmartPort USB" to all channels.
	<b>Simple LAN sharing between IFP and slot-in device</b>	yes
<b>Power</b>	<b>Voltage</b>	100-240VAC +/- 10% Wide Range
	<b>Consumption</b>	81W (Typ.) < 0.5 W ("Off")
<b>ERGONOMICS</b>	<b>Wall Mount (VESA® )</b>	400 x 200
<b>OPERATING CONDITIONS</b>	<b>Temperature (° C)</b>	0°C to 40°C
	<b>Humidity</b>	10% ~ 90% RH non-condensing
<b>DIMENSIONS (W x H x D)</b>	<b>Physical (inch / mm)</b>	49.9 x 30.4 x 3.3 in / 1268 x 773 x 85 mm
	<b>Packaging (inch / mm)</b>	56.2 x 34.6 x 8.7 in / 1428 x 878 x 220 mm
<b>WEIGHT</b>	<b>Net (lb / kg)</b>	68.34 lb / 31 Kg
	<b>Gross (lb / kg)</b>	85.98 lb / 39 Kg
<b>REGULATIONS</b>	<b>REGULATIONS</b>	FCC, cTUVus, CB, CE, BSMI, RCM, EAC
<b>Energy Star version</b>	<b>Energy Star version</b>	ES7.1
<b>EEL rating</b>	<b>EEL rating</b>	A+
<b>PACKAGE CONTENTS</b>	<b>PACKAGE CONTENTS</b>	1. Power cable x 4 2. Remote control 3. USB cable 4. AV cable 5. Touching pen x 2 6. Quick Start Guide 7. RS232 adapter 8. Clamp x 5 9. Plate 10. Screw x 8 11. HDMI cable
<b>Compatible Slot-in PC</b>	<b>Compatible Slot-in PC</b>	VPC14-WP series VPC10-WP series

VPC15-WP series  
VPC16-WP series  
VPC17-WP series

[www.viewsonic.com](http://www.viewsonic.com)

IFP5550-2

01092020