

Yealink

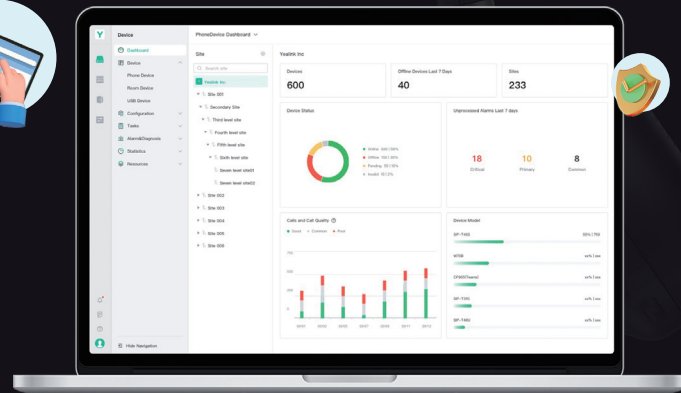
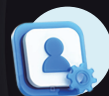


# YEALINK MANAGEMENT CLOUD SERVICE

A Powerful Device Management Platform to Support A Hybrid Workplace

# One-Stop Platform to Manage It All

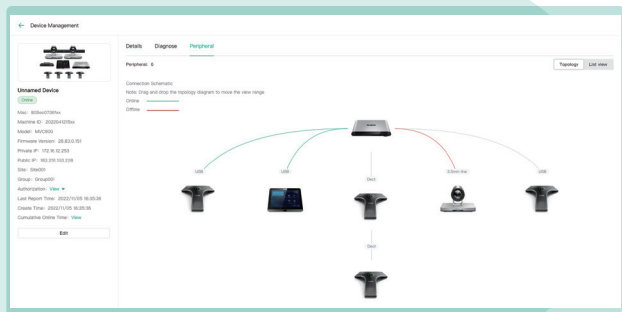
With Yealink Management Cloud Service (YMCS), you can effortlessly manage all devices in your hybrid workplaces on the cloud. YMCS allows you to deploy, upgrade, monitor and troubleshoot devices easily and timely, ensuring business continuity to the maximum extent.



## Room Devices Management in Ease

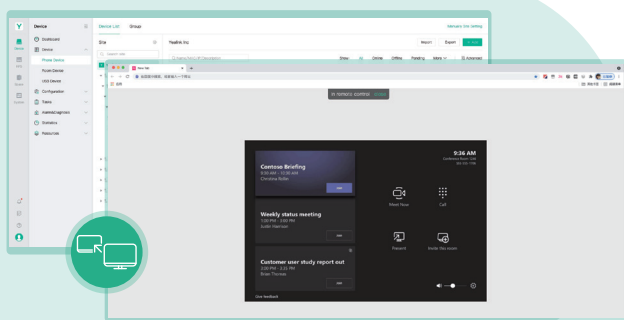
### View device connection at a glance

Device connection topology diagram in the platform allows you to check the connection way quickly, quickly diagnosis in case of network issues. This saves your time in troubleshooting issues and deploying new equipment.



### Address issues remotely

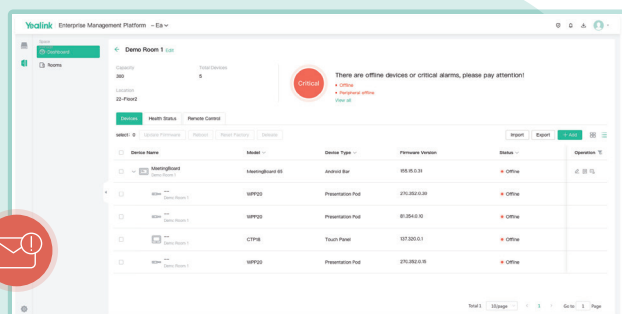
The remote desk feature enables you to control and diagnose room system remotely to address issues quickly without travelling.



### Get alarms for a guaranteed response

The YMCS now supports multiple real time alarms including device offline, firmware upgrade failure, low battery, etc.

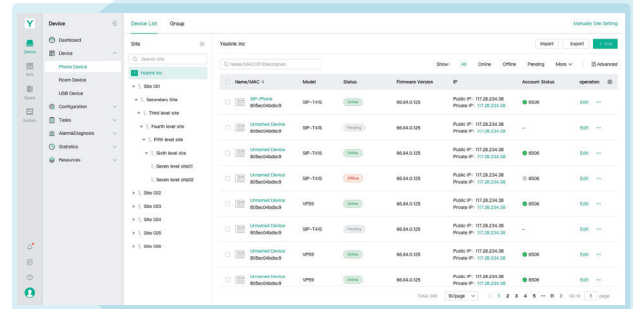
Admins can also set notification mails in the system so that IT admins don't miss any alarm and response quickly.



# Efficient and Convenient Phone Management

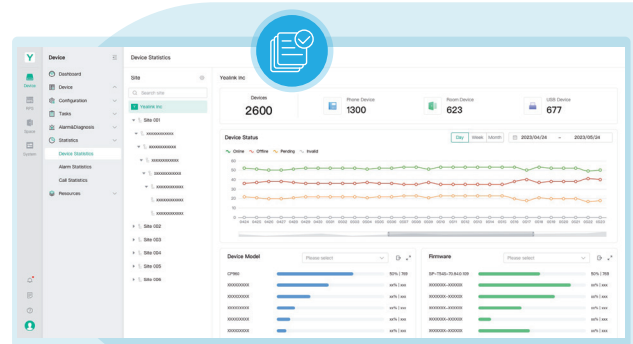
## Manage devices in bulk

Upgrade and update phones in bulk by specifying firmware and resources to save your effort.



## Get alarms for a guaranteed response

The YMCMS supports multiple real time alarms for phones including poor call quality, registration failure, firmware upgrade failure, etc. Admins can also set notification mails in the system so that IT admins don't miss any alarm and response quickly.



## Schedule tasks worry-free

The YMCMS enables you to implement management tasks during off-hours, ensuring business continuity. You can also view the execution result of each task to give you a peace of mind.

The screenshot shows a 'Scheduled Task' execution log. It includes a table with columns for Task Name, Task Model, Task, Execution Status, and Operation. The log details the execution of tasks like 'Firmware Upgrade' and 'Status Check' for various device models, with columns for 'Success' and 'Failure' counts.

This screenshot provides a detailed view of the 'Device List' for 'YMCMS INC'. The table lists individual devices with columns for Name/Model, Model, Status, Host IP, Parent Device, Connected Version, and Primary Version. It shows a list of devices with their unique identifiers and IP addresses.

## USB Devices Management

In addition to basic firmware upgrades, the YMCMS also provides device alarm services in the case of device loss.



## A POWERFUL TOOL FOR BUSINESS PARTNERS

For business partners, responding and solving issues quickly can be a vital part of their commitment to users. The YMCS provides multi-tenant and remote services of Yealink devices for the hosted enterprises to save time and labor costs. Partners can also set real-time alarms and diagnoses to ensure timely responses.

## Enhanced Data Security with Azure-Based Service

The YMCS is based on Microsoft Azure, which provides a robust infrastructure to protect your information from unauthorized access and ensure data security at all times. You can be assured that Yealink is protecting your data via one of the most secure and reliable cloud platforms available today.



## Your Information is Rigorously Protected



Yealink's SOC 2 Type 2 report provides independent attestation on the suitability of design effectiveness of the controls relevant to the security, availability, and privacy of Yealink Management Cloud Service (YMCS).



The General Data Protection Regulation (GDPR) is the world's strictest privacy and security law. Yealink strictly complies with current EU data protection regulations and has completed an independent GDPR compliance assessment.



**NETSPI™** The YMCS has performed NetSPI, the world's leading independent labs, penetration test to meet the strictest security standards.



The YMCS is ISO 27001:2013 certified, which demonstrates that Yealink has implemented best-practice information security processes.

