

commBOX



SIGNATURE MICROSOFT TEAMS ROOMS SOLUTION

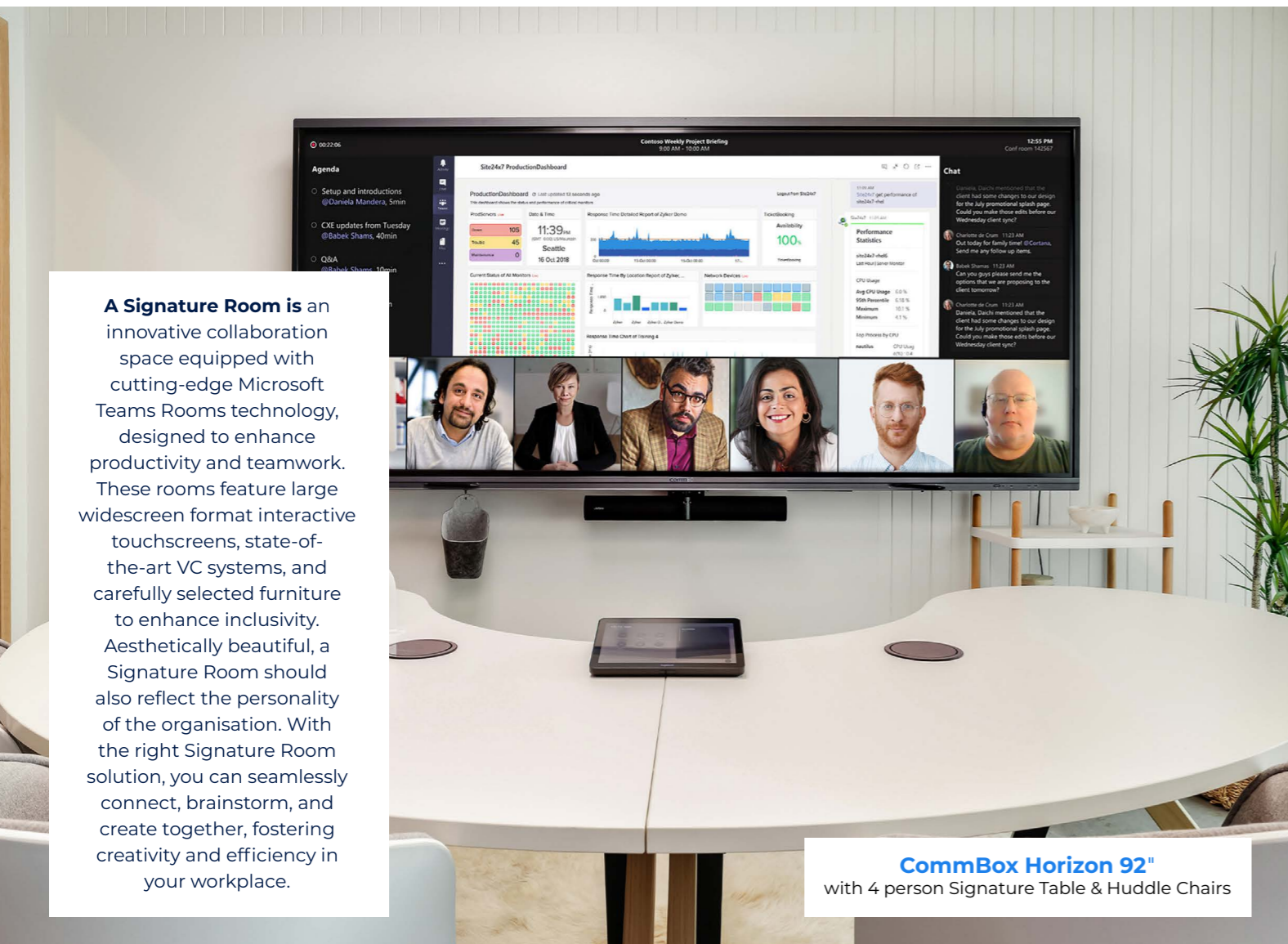
In collaboration with **karter.**

 Microsoft

What is a **Signature Room**



CommBox Horizon 105"
with 6 person Signature Table & Huddle Chairs



CommBox Horizon 92"
with 4 person Signature Table & Huddle Chairs

A Signature Room is an innovative collaboration space equipped with cutting-edge Microsoft Teams Rooms technology, designed to enhance productivity and teamwork. These rooms feature large widescreen format interactive touchscreens, state-of-the-art VC systems, and carefully selected furniture to enhance inclusivity. Aesthetically beautiful, a Signature Room should also reflect the personality of the organisation. With the right Signature Room solution, you can seamlessly connect, brainstorm, and create together, fostering creativity and efficiency in your workplace.

COMMBOX **HORIZON**

92" | 105" - ASPECT RATIO: 21:9

Ultrawide
Widescreen
Meeting Room
Solutions

Introducing the next generation of intelligent ultra-wide interactive touchscreens.

Advanced Widescreen Meeting Room Solutions

Expand your view and enhance your experience with 92" and 105" Horizon widescreen meeting room solutions. The expansive rich 5K ultra-wide interactive screen, in two convenient sizes, offers a unique meeting 21:9 display in design, giving you 33% more usable screen space, allowing enhanced accessibility and flow-on productivity within the hybrid working environment.

Now with CommBox OS powered by Android 13, the hyper-fast chipset offers the ultimate in screen interaction and advanced touchscreen experience.

Key Features

- Enjoy the Microsoft Teams Rooms Front Row layout for optimal hybrid collaboration.
- Collaborate and brainstorm with the CommBox Whiteboard on an infinite canvas.
- Easily annotate over any content, allowing for quick capture and sharing of meeting notes.
- Seamless writing experience with Microsoft Ink integration.
- Wirelessly share content from personal devices using CommBox Connect, supporting Miracast with Touchback, Chromecast, AirPlay, or the app.
- Effortlessly manage your devices remotely with CommBox Manage, which includes a 7-year licence.

Microsoft Teams Rooms Solution

Tailored for Microsoft Teams Room and Zoom Rooms, the Horizon range delivers a Signature Meeting Experience designed to elevate your organisations leadership communication.

With expansive deliverability, you can also transform your meeting space with our Signature range, an original innovative Karter collaboration designed to enhance the Microsoft Signature Teams Rooms Front Row experience. From huddle rooms to large auditoriums & conference rooms, improve meeting collaboration with a rich and collaborative Teams meeting experience that's simple to use, deploy, and manage. Designed for flexible work and strong remote communication & participation.

Commbox Cyber Security

CommBox products, including CommBox OS, Connect, Manage, and Signage, are designed with security as the foundational pillar, ensuring the confidentiality, integrity, and availability of company data. All CommBox software engineers are members of OWASP, have completed Secure Development Training and develop according to the OWASP Top 10 standard.

Why Choose Commbox Horizon

CommBox Horizon 92" and 105" 21:9 widescreen is designed to meet the standards specified by Microsoft Teams Room as best interactive and viewing practice, by enabling more touch points and eliminating higher brightness issues found within many competitor screens.

The Horizon Range uses standardised practices enabling faster, smaller and lighter transitions during meetings whilst also maintaining optimal sound, clarity and speaker performance.

Our Partners Microsoft logitech

Microsoft Teams Front Row layout

Jabra ^{GN} poly Yealink



COMMBOX LED BOARD

120" | 138" | 150" | 180" | 220" - ASPECT RATIO: 16:9

Signature
Meeting Room
Solutions

What are the key benefits of the horizon range?

Ultimate Teams Room Experience: The CommBox Horizon range is intentionally designed to complement the preferred viewing option Microsoft Teams Front Row Layout.

Improved Multitasking: Meeting Room screens often serve multiple purposes, including agenda presentations, video feeds, presentation materials and shared documents. With ample space on the 21:9 screen, either on the 105" or 92", switching between presentations and viewing multiple documents is easy.

Better Collaboration: The Horizon ultra-wide screen with CommBox OS provides a broader canvas for whiteboarding. The enhanced face-to-face balanced interaction on screen improves the overall collaboration experience. With Microsoft Ink integration, collaborating and annotating on Microsoft docs including PowerPoint and Word is effortless, clear and effective.

Enhanced Accessibility: The aspect ratio of Horizon is 21:9 allowing for a more extensive, broader and clearer display of meeting content. Presentations, documents, and videos are automatically more visible to all participants, even for those seated at the sides of a large room or auditorium style meeting space.

Future Proofing: As the demand for meeting room solutions continue to evolve, Horizon ultra-wide screens provide a beneficial solution, adapting easily to the changing needs of technology.

Overview: Horizon Range Key Specifications

- 5K Crystal Clear Bright 400nit Display with anti-glare for optimal viewing with an additional 33% more viewing space than a 16:9 86" screen
- Available in 105" and 92" 21:9 aspect ratio
- CommBox OS powered by Android 13
- Powerful compute - 8GB RAM / 64G ROM
- Dual Quad Core Processor
- x 2 16W + 1 x 15W Subwoofer for premium sound
- x 2 USB-C In
- 50 point touch with pen tip and finger differentiation and palm rejection
- Gesture support
- Built-in microphone with 8m pick-up
- Available USB ports at the top of the screen
- Removable WIFI 6 and Bluetooth 5



Scan to view Horizon specs

Plug & Play Compatibilities

UC Vendor enabled

Engineered to support your choice of advanced meeting room solutions. The Horizon range has been rigorously tested with the world's leading UC Vendors. With an agnostic OS, the Horizon range adapts perfectly with Microsoft Teams Rooms & Zoom Rooms using compatible devices.

Introducing premium communication and collaboration in expansive LED screen technology.

Advanced Widescreen Meeting Room Solutions

Expand your view and enhance your experience with LED meeting room solutions. The expansive rich 2K & 4K screens, in various convenient sizes, offers a unique meeting display in design, with enhanced accessibility and flow-on productivity within the hybrid working environment.

Now with CommBox OS powered by Android, the ultimate in screen interaction and advanced experience.

Key Features

- Enjoy the Microsoft Teams Rooms Front Row layout for optimal hybrid collaboration.
- Features user-friendly CommBox OS with screen sharing.
- Wirelessly share content from personal devices using CommBox Connect, supporting Miracast with Touchback, Chromecast, AirPlay, or the app.
- Effortlessly manage your devices remotely with CommBox Manage, with includes 7 year license.

Microsoft Teams Rooms Solution

Tailored for Microsoft Teams Rooms and Zoom Rooms, the LED Board 16:9 range delivers a Signature Meeting Experience designed to elevate your organisations leadership communication.

With expansive deliverability, you can also transform your meeting space with our Signature range, an original innovative Karter collaboration designed to enhance the Microsoft Signature Teams Rooms Front Row experience. From huddle rooms to large auditoriums & conference rooms, improve meeting collaboration with a rich and collaborative Teams Rooms meeting experience that's simple to use, deploy, and manage. Designed for flexible work and strong remote communication and participation.

CommBox Cyber Security

CommBox products, including CommBox OS, Connect, Manage, and Signage, are designed with security as the foundational pillar, ensuring the confidentiality, integrity, and availability of company data. All CommBox software engineers are members of OWASP, have completed Secure Development Training and develop according to the OWASP Top 10 standard.

Why Choose CommBox LED Boards

CommBox LED Screens are designed to meet the standards specified by Microsoft Teams Room as best collaboration and viewing practice, by enabling more touch points and eliminating higher brightness issues found within many competitor screens.

The LED Board Range uses standardised practices enabling faster, smaller and lighter transitions during meetings whilst also maintaining optimal sound, clarity and speaker performance.

Our Partners



Microsoft Teams Front Row layout

Microsoft logitech Jabra^{GN} poly

Yealink BARCO CRESTRON Extron.



Installation and Maintenance

Easy Installation

Install without fuss. The CommBox Horizon offers a simple set-up process that allow you to quickly configure the screen. The narrow bezel allows for seamless integration into any environment with easy-to-use mounting options.

Easy Maintenance

No maintenance required. Firmware updates are done over the air.

CommBox Manage

With a 7 Year FREE Licence, effortlessly manage your fleet of devices with CommBox Manage, the all-in-one secure cloud-based management solution. Centrally monitor, manage and support your CommBox interactive touchscreens and displays.

The intuitive web-based secure dashboard, ensures that your screens are always up-to-date and running smoothly.

Use CommBox Manage to manage the device after installation, the perfect all-in-one solution for managing screens. CommBox Manage is also compatible with other devices such as laptops, tablets, smartphones and more.

CommBox Connect

Use CommBox Connect to share from your chosen device. CommBox Connect is a feature-rich, secure screen sharing application that enables users to share their screens in real-time with others across various devices and platforms. CommBox Connect support native protocols like Miracast, Airplay and Chromecast as well as providing additional features in the CommBox Connect app for your personal device.

Works well with:



Sustainability

The CommBox Horizon display comes in recyclable packaging, has energy saving features and complies with restriction guidelines for hazardous substances such as RoHS and REACH.

What are the key benefits of the LED board range?

Ultimate Teams Room Experience: The CommBox LED Board range is intentionally designed to complement the preferred viewing option Microsoft Teams Rooms Front Row Layout.

Improved Multitasking: Meeting room screens often serve multiple purposes, including agenda presentations, video feeds, presentation materials and shared documents. With ample space on the 16:9, 21:9, or 32:9 screen, switching between presentations and viewing multiple documents is easy.

Better Collaboration: The enhanced face-to-face balanced interaction on screen improves the overall collaboration experience. Screen sharing, collaborating is effortless, clear and effective.

Enhanced Accessibility: The choice in aspect ratio of LED Boards allows for a more extensive, broader and clearer display of meeting content. Presentations, documents, and videos are automatically more visible to all participants, even for those seated at the sides of a large room or auditorium style meeting space.

Future Proofing: As the demand for meeting room solutions continue to evolve, LED Boards provide a beneficial solution, adapting easily to the changing needs of technology.

Overview: LED Range Key Specifications

- Available in 2K & 4K with multiple aspect ratios 16:9, 21:9, 32:9
- CommBox OS powered by Android 9?
- 2 X 30W speakers for premium sound
- HDMI 2 In/Out
- USB-C In
- USB 2 & 3
- 3.5 Audio Output
- LED Lifespan ≥100,000hrs
- Bluetooth enabled

Plug & Play Compatibilities

UC Vendor enabled

Engineered to support your choice of advanced meeting room solutions. The Horizon range has been rigorously tested with the world's leading UC Vendors. With an agnostic OS, the Horizon range adapts perfectly with Microsoft Teams Rooms & Zoom Rooms using compatible devices.



Scan to view LED Board specs



6
Person



Download Karter Catalogue



Signature Table

Introducing the Karter Signature Table, an original and innovative design to enhance the Microsoft Signature Teams Rooms Front Row feature.

Exemplifying originality, the Signature Table is a tactile masterpiece including 'Synergy' dual oak and black legs, paired with a refined grey acoustic felt modesty panel. Comprising three distinct table top parts – two gracefully curved ends and a centre segment – it allows flexible arrangements. Use all three sections for 6-8 people or just two for a cosy 4-6 seating.

Additionally, each part features a pop-up unit for easy access to power, data, and charging, alongside smart cable management. A true embodiment of adaptability and craftsmanship, the Signature Table harmoniously merges aesthetics and functionality.

SPECIFICATIONS

SKU: KTS

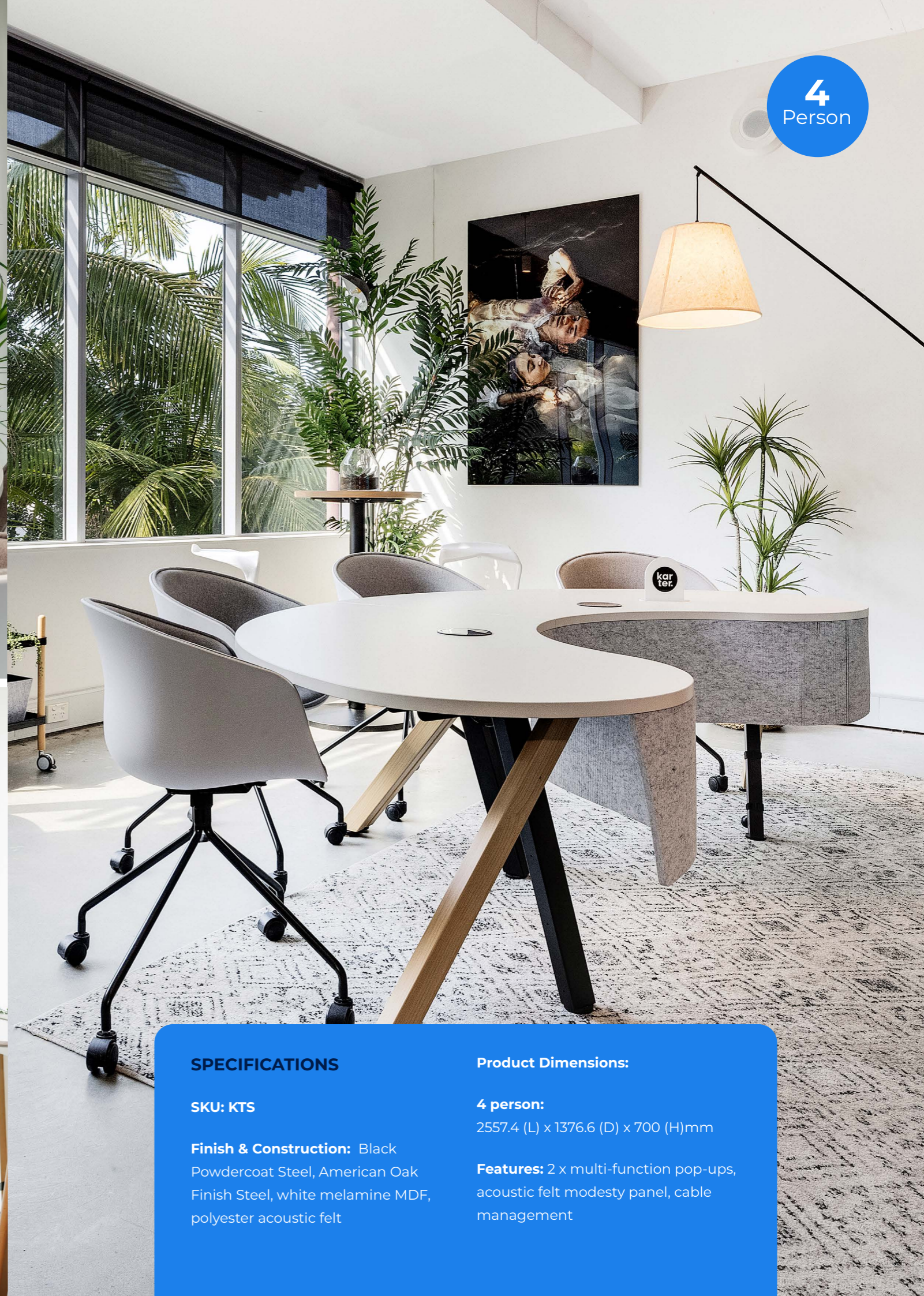
Finish & Construction: Black Powdercoat Steel, American Oak Finish Steel, white melamine MDF, polyester acoustic felt

Product Dimensions:

6 Person:
4157.4 (W) x 1376.6 (D) x 700 (H) mm

Features: 3 x multi-function pop-ups, acoustic felt modesty panel, cable management





SPECIFICATIONS

SKU: KTS

Finish & Construction: Black Powdercoat Steel, American Oak Finish Steel, white melamine MDF, polyester acoustic felt

Product Dimensions:

4 person:
2557.4 (L) x 1376.6 (D) x 700 (H)mm

Features: 2 x multi-function pop-ups, acoustic felt modesty panel, cable management



We focus on *Sustainability*

Environmental Considerations

CommBox displays are designed with energy efficiency in-mind. With dedicated design in reducing energy emissions and considered environmental footprint which extends to include structural considerations during manufacture of controlled emissions, controlled power-on heat dispersion, regulated temperature & EMI Shielding.

The CommBox Horizon range complies with restriction guidelines for hazardous substances such as RoHS and REACH.



CommBox Commitment to Community

The partnership between CommBox and key reseller partners represents a pioneering initiative to re-purpose interactive touchscreens for remote First Nations communities, a testament to our commitment to creating equitable access to technology and education.

This collaboration not only breathes new life into technology but also opens doors to a world of interactive learning and connectivity that was previously out of reach for these communities.

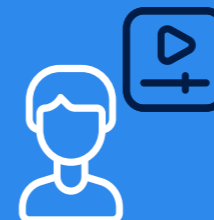
For further information, please visit commbox.com.au/community



THE COMMBOX Experience

At CommBox, we believe the experience is just as important as the product itself. That is why we offer The CommBox Experience. An unparalleled level of care and support sets us apart from other screens. Our local Australia-based support team is available to help you every step of the way, by providing expert training, guidance and troubleshooting whenever you need it. With a guarantee same-day response if you get in-touch before 3pm AEST. Plus, with our 5 Year onsite swap-out warranty, you can set knowing your investment is protected.

At CommBox, we are committed to ensuring that you have the best possible experience with our products, and we're always here to help you get the most out of your screen.



Include Free Virtual Training



Live Chat Support - Comprehensive Knowledge Base



Subscription Free



Trust & Security



5 Year onsite swap-out warranty



Contact Us
commbox.com.au

Do it better

Transforming meeting & learning spaces since 1976.
Australian Designer & Manufacturer of Collaboration Technology.

commBOX

CommBox Experience Centre - NSW

32/6 Jubilee Ave
Warriewood NSW Australia 2102

CommBox Experience Centre - QLD

6/477 Boundary St
Spring Hill QLD Australia 4000

 commbox.com.au
 +61 2 9975 6001
 sales@commbox.com.au





Click to follow us



commBOX.com.au

Middle East & North Africa

 commbox.ae
 +971 4 4294900
 sales@commbox.ae

New Zealand

Experience Centre:

The Studio
104 Fanshawe St
Auckland 1010

 commbox.co.nz
 +64 9 801 6765
 sales@commbox.co.nz

South Africa

Experience Centre:

6 Arklow Rd
Founders Hill, Edenvale
South Africa 1609

 commbox.co.za
 +27 11 452 2803
 sales@commbox.co.za

Southeast Asia

Experience Centre:

229 Mountbatten Rd
#02-03/04 Mountbatten Square
Singapore 398007

 www.commbox.asia
 +65 6950 5599
 sales@commbox.asia